

# KEYNOTES

SECURING YOUR SUCCESS



## OPENING A WELLS FARGO CHEST

See how a  
safe tech  
opened this  
antique  
strongbox

**Welcome  
to My Crib**

Learn how to  
use cribbing to  
move safes

**PLUS**

## Launching Soon: ALOA's New Website





# ALOA 2025

Your Key to Connections

**Hilton Orlando**  
ORLANDO, FLORIDA

**Classes**  
AUGUST 3-7, 2025

**Security Expo**  
AUGUST 8-9, 2025

Used by thousands of locksmiths around the world - EVERY DAY.



## FRA-2001

### COMPUTER-DRIVEN CODE MACHINE

Check out Framon's fully automatic code machine – powered by our top selling software Genericode! The 2001 can originate almost any edge cut key in use today (sorry, no Medeco angled cuts). The machine makes quick work out of cylindrical and automotive key cutting, including interchangeable core and most restricted / high security keyways. Add custom depth & space charts quickly and easily. Originate a single sided key in 15-20 seconds with the expected precision of Framon equipment. As you would expect, the machine includes our free tech support and customer service second to none!



(Laptop not included)

## ARE YOU READY FOR CAMPING SEASON?

### GLOBAL LINK PRECUT / MASTER SET

This set includes one of each key in the G301-G390 as well as a Global Link change (BD986), master (BD985), and compartment key (BD1016). In addition, the set also includes several other compartment keys normally found on Global Link affiliated campers & RV's. Included are CH751 (BD467M), R001 (BD741M) and CK330. **Part #BDGLSET**



**MK600** | FIC J Series Master  
\$12.00 each



**BD1081** | FIC J Series Blank  
\$5.00 each



**SM1 Master** | TriMark Master  
6000-6174 Series \$50.00 each



**TM1RP Silca** | TriMark Blank  
6000-6174 Series \$9.45 each

We also carry a full line of Mastered and Non-Mastered Cylinders for FIC & Global Link

Be sure to register on [bluedogkeys.com](http://bluedogkeys.com) for quick access to current key & product pricing

[framon.com](http://framon.com) | [bluedogkeys.com](http://bluedogkeys.com)

1201 West Chisholm Street • Alpena, Michigan 49707





# KEYNOTES



## Features

**34** **Introducing the New ALOA.org**  
Get the story behind the website project and get a sneak peek before it launches.

**38** **Opening a Wells Fargo Chest**  
Blaine Lucas, CJS, CML, CPS, ARL, opens an antique strongbox.

**46** **Welcome to My Crib**  
Bryan Kruysman, CML, IFDI, uses cribbing to move two safes.



## Spotlights

**12** **Automotive**  
IAAL President Ed Woods tells you what's in store at the IAAL Auto Lock Expo in May.

**23** **Investigative**  
Get a strategic update from IAIL President Clyde Roberson, CML, AHC, CPP, CMST, CFMST, AMKS.

**24** **Automotive**  
If you find yourself without an HPC card, here's what to do.

## What's New

**8** ALOA/Industry News

**10** Calendar

**10** Applicants

## Departments

**5** Presidential Perspective

**6** Executive Perspective

**14** Main Event

**18** Education

**33** Products & Services Guide

**52** Back to Basics

**58** Associate Members

**60** Marketplace

**61** Ad Index



An Exclusive from **TURN 10 WHOLESALE** to the Dealer Trade

# **SMALL** but **BEEFY** *1-Drawer Fire-Rated by FireKing®*

**Perfect Size to Fire Protect Records.**  
**Accepts Letter or Legal Hanging Folders.**

- 1 HR Fire (paper); ½ HR Fire (digital media)
- 15" **LETTER** or 12" **LEGAL** Hanging Folders
- Smooth Ball Bearing Suspension
- Cam Key Lock (2 keys provided)
- USA Made by FireKing – 4 finishes – 140 lbs.



(Parchment finish  
LETTER hanging folders - front-to-back)



(Parchment finish  
LEGAL hanging folders - side-to-side)



1-Hour Fire



1/2-Hour Fire-Rated  
for Digital Media



Made in the  
U.S.A.

**\$ 1,350 Retail \$ 675 Dealer Cost**

**Display & Sell at \$ 875 – Make \$ 200 • Sell at \$ 975 – Make \$ 300**

***A Perfect Cash and Carry for Walk-Ins.***

**FREE Box of Letter Hanging Folders** to 1st 200 Dealers.

(25 pack - \$ 20 Value for each 1P-1822-D ordered)

**File finishes: Parchment, Platinum, White, or Black**

**IN-STOCK - HUGE SELECTION FREE Freight Program (30 States) Deliver in 2-3 Days**  
***Hot Walk-in Sales.... Get Started Today & Add to Your Next Safe Order @ Turn 10***



**800-848-9790**  
**sales@turnten.com**

***NEW DEALERS WELCOME!***



**The Turn 10 Ladies:**

**Top: Lisa, Stephanie Bottom: Vivian, Melissa**



# KEYNOTES

April 2025 | Volume 71, Issue 4

## ALOA SPAI STAFF

### Executive Director

Mary May  
mary@aloea.org

### Comptroller

Kathy Romo  
kathy@aloea.org

### Finance Coordinator

Phyllis Jones  
phyllis@aloea.org

### Convention Coordinator

Phyllis Jones  
phyllis@aloea.org

### Director of Education

William M. Lynk, CML, CPS,  
ICML, CMIL, CAI, M.Ed.  
bill@aloea.org

### Associate Director of Education

John K. Hubel, CML,  
ICML, CMIL, M.Ed.  
john@aloea.org

### Convention Consultant

Kelly Parker  
kelly@aloea.org

### Operations Manager

Joe Peach, CML, CAI  
joe@aloea.org

### Membership Manager

Kevin Wesley  
kevin@aloea.org

### Administrative Assistant

Judy Risinger  
judy@aloea.org

### Legislative & Legal Counsel

Barry Roberts  
barry@aloea.org

### Media & Marketing Manager/ Education Coordinator

Dawne Chandler  
dawne@aloea.org

### Director of ALOA SPAI Chapters

Robert Mock, RL  
(856) 863-0710  
chapters@aloea.org

## EDITORIAL ADVISORY BOARD

J. Casey Camper, CML, CPS  
Tom Resciniti Demont, AHC,  
CAI, CFDI, CFL, CIFDI,  
CMIL, CML, CMST, ARL  
Tom Foxwell Sr., CFDI, RL  
Tom Gillespie, CIL, CML  
Gene Gyure Jr., CRL,  
GSA-T, CAI  
Vernon Kelley, CPL, CFDI,  
ICML, IFDI  
William M. Lynk, CML,  
CPS, ICML, M.Ed.  
Greg Parks, CRL  
Lloyd Seliber, CML  
Tony Cagle, CRL  
Ed Woods, CML, CPS, CAI

## EXECUTIVE BOARD

### President

Bill Mandlebaum, CML  
president@aloea.org

### Secretary

Tom Foxwell, RL, CFDI, CAI  
(410) 206-5772  
trustees@aloea.org

### Director, Northeast

Tony E. Wiersielis, PM,  
CPL, CFDI  
(201) 965-7156  
aew59@juno.com

### Director, North Central

Tom Ripp  
ncdirector@aloea.org

### Northwest Region Director

Adrian V. Holley, CRL, LSFDI  
HSCBozeman@gmail.com  
(406) 570-9782

### Director, Southeast

Christopher Meccia, CPL, CAI  
sedirector@aloea.org

### Director, Southwest

Wayne Winton, ARL  
swdirector@aloea.org

### Director, International - Asia

Beta Tam, BA (Hons),  
FCSFS, RL  
btam@alumni.cuhk.net

### Director, International - Europe

David O'Toole  
intdirector@aloea.org

### Director, Associate Region

Noel Flynn, RL  
(214) 819-9733  
nflynn@aloea.org

### Director, Non-Voting

Vernon Kelley, CPL, CFDI,  
ICML, IFDI  
(609) 771-3126  
vernon.kelley@gmail.com

### Director, Non-Voting

Robert R. Cullum, CPL  
(800) 225-1595  
bcullum@aloea.org

### Trustee

James W. Wiedman, CML  
trustees@aloea.org

### Director, AIL Division

John Truempy, CRL,  
CMIL, IFDI, AIL

### Director, IAIL Division

Clyde T. Roberson,  
CML, CMST  
(540) 380-1654

### Director, SAVTA Division

Gene Gyure Jr., CRL,  
GSA-T, CAI  
genegyure@me.com

### Director, IAAL Division

Edward Woods,  
CML, CPS, CAI  
keysmaderite@gmail.com

Additional contact information for  
the ALOA SPAI Board is available  
on the ALOA SPAI website at [www.aloea.org](http://www.aloea.org) or by contacting the  
ALOA office at *Keynotes*, 1408 N.  
Riverfront Blvd., Dallas, TX 75207.  
Phone: (214) 819-9733  
Fax: (469) 453-5241  
E-mail: [membership@aloea.org](mailto:membership@aloea.org)

## PAST PRESIDENTS

### 2017-2021

James W. Wiedman, CML

### 2015-2017

Tom Foxwell, RL, CFDI, CAI

### 2011-2015

Tom Resciniti Demont, AHC,  
CAI, CFDI, CFL, CIFDI,  
CMIL, CML, CMST, ARL

### 2009-2011

Hans Mejlshede, CML

### 2007-2009

Ken Kupferman, CML, CPS

### 2005-2007

Robert E. Mock, RL

### 2003-2005

William Young, CML, CPS

### 2001-2003

Randy Simpson, CML

### 1999-2001

John Greenan, CML, CPS

### 1997-1999

Dallas C. Brooks, RL \*

### 1995-1997

David Lowell, CML, CMST

### 1993-1995

Breck Camp, CML \*

### 1991-1993

Henry Printz, CML \*

### 1989-1991

Evelyn Wersonick, CML, CPS

### 1987-1989

Leonard Passarello, CPL \*

### 1985-1987

Joe Jackman, CML \*

### 1983-1985

Stanley Haney, CPL \*

### 1981-1983

Louis LaGreco, CPL \*

### 1979-1981

John Kerr, RL \*

### 1977-1979

Clifford Cox, CML \*

### 1974-1977

Charles Hetherington \*

### 1972-1974

Gene Laughridge \*

### 1970-1972

William Dutcher, RL \*

### 1968-1970

Constant Maffey, RL \*

### 1966-1968

Harold Edelstein, RL \*

### 1964-1966

William Meacham \*

### 1962-1964

Robert Rackliffe, CPL \*

### 1960-1962

Edwin Toepfer, RL \*

### 1956-1960

Ernest Johannesen \*

\*deceased

## KEYNOTES STAFF

### Publisher

m3Magazines  
m3magazines.com

### Editor

Wendy Angel  
editor@aloea.org

### Ad Sales

Adam Weiss  
m3Magazines  
(817) 908-7827  
adsales@aloea.org

### Director of Print Strategy/Art Director

Ben Carpenter  
ben@m3magazines.com

### Graphic Designer

Kim Baker

No part of this publication may be  
reprinted without permission.

### POSTMASTER:

Send address changes to:  
*Keynotes*, 1408 N. Riverfront  
Blvd., Dallas, TX 75207.

Copyright 2025 ALOA SPAI.  
All rights reserved.

**Mission Statement:** The mission of the ALOA Security Professionals Association, Inc., as dedicated members of the security industry, is to ensure professional excellence and ethics; create a public demand for professional locksmith services; represent and speak for the locksmith industry; and expand the exchange of trade information and knowledge with other security-related organizations to preserve and enhance the security industry.

**Policies and Disclaimer:** *Keynotes* is the official publication of the ALOA Security Professionals Association, Inc. (ALOA SPAI). *Keynotes* does not guarantee the accuracy of any data, claim or opinion obtained or quoted from an acknowledged source. The opinions expressed by the authors do not necessarily reflect the official views of ALOA SPAI. Advertisements and new products or service information does not constitute an endorsement by ALOA SPAI, nor does the Association accept responsibility for the inaccuracy of any data, claim or opinion appearing in this publication due to typographical errors on the part of the authors. Association staff or its agents. ALOA SPAI reserves the right to refuse any article for any reason, and to edit submissions for accuracy, clarity and fairness.

*Keynotes* (ISSN 0277 0792) is published monthly except for combined January/February and July/August issues by ALOA Security Professionals Association, Inc., 1408 N. Riverfront Blvd., Dallas, TX 75207. Subscription rates are \$25 per year for members. Periodical class postage paid at Dallas, Texas and additional offices.



# Upcoming Education Opportunities

**H**ERE WE ARE IN APRIL. FORTUNATELY, the extreme cold seems to have gone away. Those days of negative wind chill temperatures were a killer for outside work.

SAFETECH will likely be underway by the time you are reading this, and classes were filling up fast as of press time. If you're reading this before April 7, you can still get registered and attend classes, see old friends and make new ones. The trade show portion is April 12, so that's another opportunity to take advantage of this event. If you're within driving distance of Lexington, KY, why not come and check it out?

We will have two special events at SAFETECH. Lockmasters and Sargent & Greenleaf are celebrating their anniversaries this year and will each host off-site events at the convention. There will be food galore and tours. Sargent & Greenleaf's event will be at its headquarters on Thursday, April 10, at 6 p.m. The Lockmasters event is in conjunction with the Kick-Off Party and Friends of SAVTA Live Auction on Friday, April 11, at 7 p.m. For both events, there will be transportation to and from so you don't have to worry about it.

## IAAL Auto Lock Expo

If you are an automotive person, the IAAL Auto Lock Expo is coming up in May in Cedar Rapids, IA. There are a lot of activities planned for this convention plus three full days of classes. There are even free demos and other free educational opportunities on Saturday in conjunction with the trade show. This is a great chance to learn another part of the industry if you're new to auto work, or to expand your skills.



**Bill Mandlebaum, CML**  
President  
ALOA Security  
Professionals  
Association, Inc.  
[president@aloea.org](mailto:president@aloea.org)

“  
Do not wait  
until the last  
minute if you  
plan to take  
classes, as  
some of them  
fill up fast.  
”



## ALOA 2025

Online registration for the ALOA Convention & Security Expo in Orlando will open up in May, and we will have all of the schedules and class listings in the May issue of *Keynotes*. Do not wait until the last minute if you plan to take classes, as some of them fill up fast. We'll be back at the Hilton Orlando, which was a great venue for us two years ago after they renovated it.

I hope to see many of you at one or all three of these conventions. These are the best opportunities you'll get all year to have hands-on instruction from the best instructors in the industry.



# Get Rewarded for Recruiting New Members

**WE ARE COMING UP QUICKLY ON** the IAAL Auto Lock Expo in Cedar Rapids, IA. While we always have automotive classes at the ALOA Convention, this is your chance to have three days of concentrated automotive-only education with expanded subject matter. We'll be at the DoubleTree by Hilton Hotel Cedar Rapids Convention Complex May 14-17. Whether you're a seasoned automotive expert or you're new to the topic, there will be classes for you — and we truly have the best instructors in the industry.

Add to that the events and one-day trade show, and you have all the elements you need for a great event for automotive security professionals. In the Main Event column on page 14 in this issue, get more information on the events and classes. More information is available on the IAAL Auto Lock Expo convention section on [www.aloa.org](http://www.aloa.org), and online registration is available on [www.aloamembers.org](http://www.aloamembers.org).

We're excited to host this event again after the first wonderful IAAL Auto Lock Expo in 2023. I hope to see you there and at the ALOA Convention & Security Expo in Orlando August 3-9 for more auto education — and more.

## Get Rewarded for Recruiting

As an ALOA member, you get a ton of benefits, from technical support and discounts on education, reference materials and conventions to free industry bonding, a listing on FindALocksmith.com, *Keynotes*, networking and more. If you take advantage of all your benefits, your membership can more than pay for itself.

And now, we want to reward you further. Share



**Mary A. May**  
Executive Director  
[mary@aloa.org](mailto:mary@aloa.org)

“  
We are excited  
to share that  
a new ALOA  
website is  
coming soon!  
”



the value of ALOA membership with your colleagues and industry friends. For every new ALOA member you recruit and sponsor, you will get 20% off your 2026 dues. This means if you recruit five new members, you can get a free membership!

For information on this new program, contact [membership@aloa.org](mailto:membership@aloa.org).

## New ALOA Website Is Coming

We are excited to share that a new ALOA website is coming soon! It's in the development stage and will have all-new content, navigation and design. This is a long time coming, and we are happy to share the news. Look at the article on page 34 for more information and a sneak peek.

See you all at SAFETECH!

*Mary A. May*

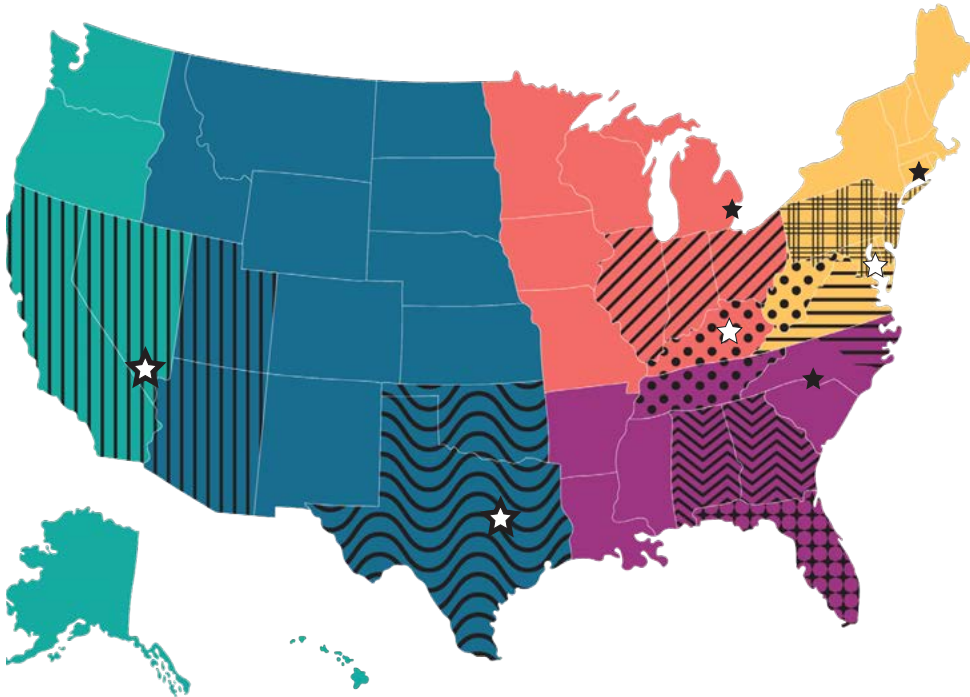
# LOCKMASTERS®

A Unique Source of Locks, Tools, Hardware & Training

ALLEGION™ 


ASSA ABLOY  
Opening Solutions

dormakaba 




## Account Managers

**Aaron Dunson**   
West Territory  
Direct: 859.305.6337

**James Decker**   
Midwest Territory  
Direct: 859.241.6271

**Jeana Littral**   
Central Territory  
Direct: 859.305.6271

**Kevin Wiley**   
Southeast Territory & Safes  
Direct: 859.305.6234

**Jonah Brooks**   
Northeast Territory  
Direct: 859.305.6250

## Locations

☆ Lockmasters Training  
Kentucky  
Maryland (DC)  
**New! Nevada**

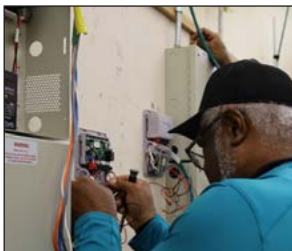
☆ Lockmasters Warehouses  
Kentucky  
Maryland (DC)  
**New! Nevada**  
Texas (select inventory)

★ JLM Warehouses  
Michigan  
**New! Nevada**  
North Carolina  
Texas

★ Orchard Lock Distributors  
Connecticut

**Coming Soon to  
Las Vegas, Nevada!**

**Premier Hands-on Training Centers** - Maryland, Kentucky, *Coming Soon to Nevada*



**Access Control Technician**  
10 Day Class



**Intro to Locksmithing**  
5 Day Class



**Professional Locksmithing**  
10 Day Class



**Professional Locksmithing II  
Door & Door Hardware**  
5 Day Class

**LOCKMASTERS**  
INCORPORATED  
  

**To Place an Order or for Support Call 800.654.0637  
To Register for Training Call 866.574.8724**

Distribution | Education | Manufacturing





# Register for IAAL by April 18 For a Chance to Win!

**T**HE IAAL AUTO LOCK EXPO IS COMING UP SOON: May 14-17 in Cedar Rapids, IA. If you register by the early registration deadline, you will be entered into a drawing for a chance to win an amazing prize package worth \$500!

Items in the bag include a one-night stay at the Doubletree Cedar Rapids, including breakfast and free parking. You'll also receive a bunch of local-themed items such T-shirts, a golf towel, ice pack travel bag and a Big Grove Brewery gift card.

To enter, just register by April 18 for the Auto Lock Expo — that's it! Then you can also take advantage of three days of the best automotive education in the industry, a trade show and free education and demos on Saturday.

To see the classes and event information, go to the IAAL Auto Lock Expo tab on [www.aloa.org](http://www.aloa.org). Registration is available online at [www.aloamembers.org](http://www.aloamembers.org).



## Booth Space Still Available for the Auto Lock Expo

**T**HERE IS STILL TIME TO RESERVE YOUR BOOTH SPACE for the IAAL Auto Lock Expo in beautiful and centrally located Cedar Rapids, IA. Race to secure your space and get access to an engaged, automotive audience you

can meet with one-on-one at the expo.

For more information, go to the IAAL Auto Lock Expo page on [www.aloa.org](http://www.aloa.org) or contact Kelly Parker at (912) 713-9680 or via email at [kelly@aloa.org](mailto:kelly@aloa.org).



## Autel Premium Land Rover Style IKEY Now Available

**A**UTEL'S NEW LAND ROVER-STYLE IKEY (PART NUMBER: IKEYLR5TPA) is a programmable smart key compatible with 2010-and-newer Land Rover and Jaguar vehicles. The OE-quality smart key supports 315M and 433M frequencies and features five buttons: Unlock, Lock, Trunk, Panic and Approach Lighting. The Land Rover-style IKEY is programmable with any Autel MaxiIM IMMO tablet for many Land Rover and Jaguar vehicles. An emergency blade is included. It requires battery CR2032 (not included).

Autel IM tablets and IKEYS are designed to be used by professional automotive locksmiths and NASTF-certified Vehicle Security Professionals. It includes a one-year limited warranty.

Autel has released a new smart key compatible with 2010-and-newer Land Rover and Jaguar vehicles.



## DEWALT Releases New Circular Saw and Grinders

**D**EWALT, A STANLEY BLACK & DECKER BRAND, HAS announced new grinders and a circular saw. The 60V MAX Side Handle Detect Small Angle Grinder has control features like a built-in trigger timer and integrated side-handle detect system requiring both hands to operate. Featuring an anti-rotation system and a 13-amp brushless motor, the grinder delivers a maximum no-load speed of 9,000 RPM and 2,400 MWO.

The 20V MAX Brushless Cordless 4½" grinders are available in slide-switch and paddle-switch versions. They are equipped with overload protection, accommodating 4½" wheels and include both a Type B guard for grinding and a Clip-On Guard to convert the Type B guard for cutting operations.

The 20V MAX XR 7¼" Metal Cutting Circular Saw features a lightweight design and delivers up to 1,400 MWO of power to help maximize productivity on the job. This tool can complete a variety of applications with a 2½" depth of cut and features an integrated chip collector.



DEWALT has released a new circular saw and two grinders.

### NEWS BRIEFS

**ASSA ABLOY** has acquired **Wallace & Wallace** and **Wallace Perimeter Security**, a Canadian manufacturer, distributor and installer of perimeter fencing, door and gate solutions for the commercial and residential markets. Wallace & Wallace was founded in 1946 and has 160 employees. The main office and factory are in Winnipeg, Manitoba, Canada. Wallace & Wallace will be part of the Business Segment Perimeter Security within the Entrance Systems Division.

**QSecurity Industries** has a \$2,500 special through April 15 on the Combi QX3, a high-speed, wirelessly controlled safe lock autodialer for opening Group 2 mechanical combination locks. A precision step motor with an optical encoder along with carefully designed dialing algorithms allows the Combi QX3 to open standard 3-wheel combination locks in an average of eight hours. Visit [www.qsecurityproducts.com](http://www.qsecurityproducts.com) for more information.

### PRODUCT BRIEFS

**Lucky Line Products** has announced a new design for its product jars to accommodate most shelving and store displays. The part numbers remain the same, and you may receive the original jar design during the transition period.



New "Add Key" coverage for BMW G-Chassis vehicles is available on

**Autel** IM508 and IM608 key and immobilizer programming tablets with the purchase of a one-year software card or via an on-tablet credit card or PayPal payment. A one-key token purchase is also available. You can perform "Add Key" for BMW F- and G-Chassis X3, X4, 5, 6, 7-series, and M5 vehicles using 433 MHz systems. The process requires a working key ("all keys lost" is not supported) and an Autel G-Box/2/3 programming adapter. An active Autel subscription and internet connection required.



**INOX** has announced the latest update to the INOX Smart App. The latest app version includes a move-in and move-out function, ability to add multiple locks to a single unit, unit categories of public or non-public, multi-device support, user invitations, a one-tap lock feature, gateway matching and more. There are also modifications and improvements to the existing functions and features.

To access the full functionality, **users must download the new version of the app**, available in Google Play and the App Store.





## CALENDAR

## APRIL 2025

April 6-12

**SAFETECH 2025**

Griffin Gate Marriott  
Lexington, KY  
conventions@aloea.org  
www.savta.org



April 24-25

**Banner Solutions 2025  
Security Professional's  
Trade and Training Expo**

Houston, TX  
www.bannersolutions.com

April 28-May 2

**DHI Spring Classroom Series**

Grand Sierra Resort and Casino  
Reno, NV  
www.dhi.org

## MAY 2025

May 2-3

**Professional Locksmiths  
Association of Alberta  
Convention and Trade Show**

iHotel  
Red Deer, Alberta, Canada  
bod@plaa.org

May 15-18

**IAAL Auto Lock Expo**

Cedar Rapids, IA  
conventions@aloea.org  
www.aloea.org



## JUNE 2025

June 16-20

**ALOA Fundamentals  
of Locksmithing**

ALOA Training Center, Dallas, TX  
education@aloea.org or  
(469) 453-5220  
Register at www.aloamembers.org

## AUGUST 2025

August 3-9

**2025 ALOA Convention  
& Security Expo**

Hilton Orlando  
Orlando, FL  
conventions@aloea.org  
www.aloea.org



## NEW APPLICANTS

## CALIFORNIA

San Pablo

- Benjamin Saenz Jr.  
San Francisco Marriott Marquis

Fresno

- Robert Aaron Heisinger  
County of Fresno

Sunrise

- Leroy Faulknor  
Nova Southeastern University

## COLORADO

Colorado Springs

- Grady Weeks  
Native Touch  
Sponsor: Rick D. Alamaa, CRL

## FLORIDA

Altamonte Springs

- Joseph C. Schneider  
AA ABRA KEY DABRA LOCK-  
SMITH SERVICES INC.

Bradenton

- Stanley Worley Jr.  
Freedom Locksmith LLC  
Sponsor: Thomas M. Handley

Fruitland Park

- Neal Purlee  
Dixie Safe & Lock Service LLC

Lakeland

- Terry Michael Buras  
Access Solutions Corp.

Pembroke Pines

- Oscar Maldonado  
Nova Southeastern University

Tampa

- Cory Jager  
Tampa General Hospital

## IOWA

Des Moines

- Eric F. Veal, CRL  
Iowa Safe Specialist

Waterloo

- Melissa K. Purdy  
B & B Lock & Key Inc.  
Sponsor: Kevin D. Morrison

## INDIANA

Aurora

- Kirk Womack  
Acme Lock Company LLC

Carmel

- Igor Kaitukov  
Mr Fix Us LLC

## KENTUCKY

Dixon

- Jon Wicker, RL  
Lock Pro Of Kentucky LLC

Highland Heights

- Joshua Murphy  
Acme Lock Company LLC

## MARYLAND

Germantown

- Bernardino D. Perez, ARL  
JSK Auto Repair

## MINNESOTA

Nerstrand

- Stephen A. Suss  
St. Olaf College

## MONTANA

Kalispell

- Vince W. Lyons  
Great Northern Lock & Safe  
Sponsor: Justin Young, CRL

## NEW YORK

Brooklyn

- Oleksii Drach  
DBA Top Locksmith
- Zach Freach, AFL  
Walbaum Locksmiths

## OKLAHOMA

Stillwater

- Garrett J. Gil  
Scout Surveillance Systems, LLC  
DBA Scout Systems  
Sponsor: Billy G. Bartram, CRL

## TENNESSEE

Lebanon

- Caleb Arnold  
Arnold's Safe & Lock  
Sponsor: James B. Arnold, ARL
- Wendy Arnold  
Arnold's Safe & Lock  
Sponsor: James B. Arnold, ARL
- Matthew Bush  
Arnold's Safe & Lock  
Sponsor: James B. Arnold, ARL

## UTAH

Salt Lake City

- Isaac Meurer  
Glens Key Inc.  
Sponsor: Robert W. Fehr Jr., RL

## WASHINGTON

Bellingham

- Brice A. McCan, CRL  
Western Washington University

## WISCONSIN

Chippewa Falls

- Neil C. Chittendon  
Chippewa Valley Lock and Key  
Sponsor: Kenneth W. Briggs, CRL

Weston

- Jamie M. Weiland  
Anytime Lockout  
Sponsor: D. Keith Moore, CRL

## BAHAMAS

Nassau

- Nathaniel J. J. Zervos  
Sims Lock Doctor  
Sponsor: Troy D. Sims, RL
- Nicholas R. J. Zervos  
Sims Lock Doctor  
Sponsor: Troy D. Sims, RL

## CHINA

Hefei

- Luna Ngai  
Ck YaoKey Electronic Products  
Co., Ltd

## WE NEED YOUR HELP

**Attention, ALOA Members:**

Help us eliminate the industry scammer problem by screening these applicants, who are ALOA members, to ensure they meet the standards of ALOA's Code of Ethics. Protests, if any, must be made within 30 days of this Keynotes issue date, addressed to the ALOA membership department, signed and submitted via email to membership@aloea.org or via fax to 469-543-5241. For questions, contact Kevin Wesley, membership manager, at Kevin@aloea.org (469) 453-5207.

AUTEL MAXIIM

# PROFESSIONAL KEY PROGRAMMING



64GB  
MEMORY | 7-INCH  
TABLET | XP200  
INCLUDED

## IM508S & IM608PROIIKPA

128GB  
MEMORY | XP400PRO  
INCLUDED | JVCi & IMKPA KIT  
INCLUDED

UPGRADED OPERATING SYSTEM ANDROID 11

EXPERT MODE FOR ADVANCED KEY LEARNING

SMART MODE FOR GUIDED AND AUTOMATED KEY LEARNING, READ PIN/CS (ALL KEYS LOST)  
KEY GENERATION, KEY LEARNING, REMOTE LEARNING, PROGRAM AUTEL IKEYS

Autel key programming and IMMO products are designed for professional locksmiths and NASTF-registered Vehicle Security Professionals. Please ensure you meet local licensing requirements before purchasing.

VIEW THE COMPLETE  
MAXIIM PRODUCT LINE



## LAND ROVER STYLE IKEY

P/N: IKEYLR5TPA

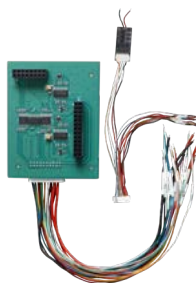
- 5-button Universal Programmable IKEY Smart Key
- Lock, Unlock, Trunk, Panic, Approach Lighting
- Program with Autel MaxiIM tablets
- Emergency Blade included
- Generate smart keys for compatible 2010 and newer Land Rover & Jaguar vehicles



## APB131 ADAPTER

- Read & Add Keys for MQB-V850 & RH850 Dashboards
- Compatible with Applicable Audi/VW, Nissan, Ford\* & Lincoln\*

\*Supported on MaxiIM IM508S & IM608PROII



## G-BOX 3

- Supports On-Vehicle & On-Bench Fast Mode in All Keys Lost Scenario for Mercedes-Benz Vehicles Using the DAS3 EIS/EZS
- All Keys Lost Password Calculations Are Up to 8X Faster



1.855.288.3587  
USSUPPORT@AUTEL.COM

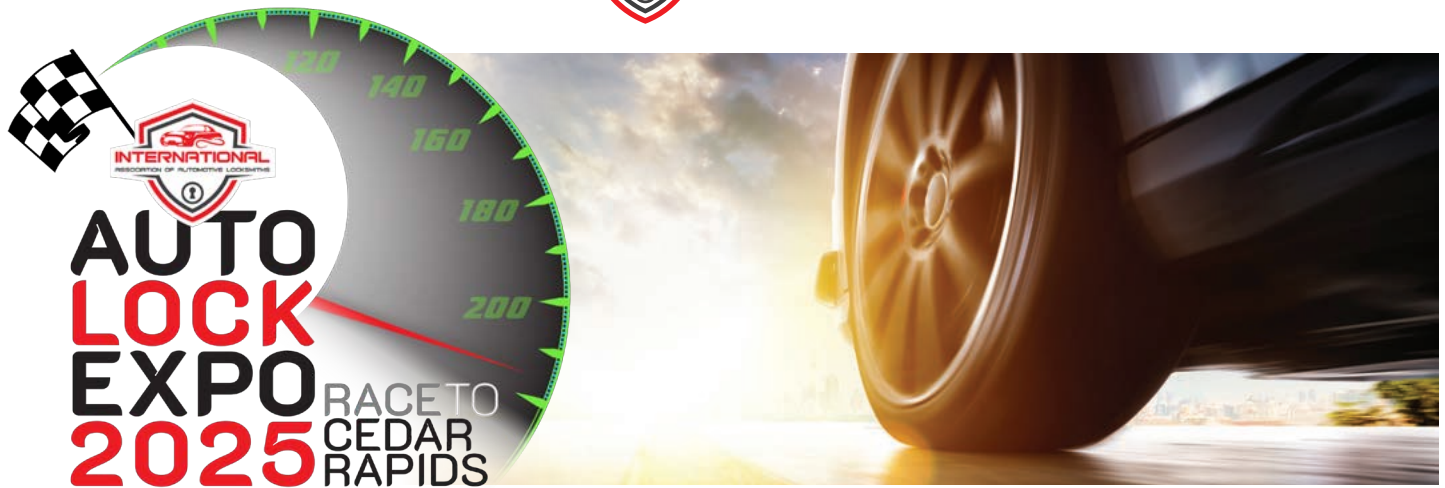


AUTEL ACADEMY TRAINING  
autel.us/academy

WEB: AUTEL.COM  
FOLLOW US: @AUTELTOOLS

# AUTEL





# Register for the IAAL Auto Lock Expo

By IAAL President Ed Woods, CML, CPS, CMAL, CAI

**R**EGISTRATION FOR THE IAAL (International Association of Automotive Locksmiths) Auto Lock Expo is open. Go to [ALO.org](http://ALO.org) and scroll down on the left, and then click on the IAAL Auto Lock Expo tab. On the webpage for the convention, you'll find easy links for the brochure, to register and to book your hotel room.

This is the second automotive-only event that ALOA has organized, and it's shaping up to be a great one. We will be in Cedar Rapids, IA — which is a great little city — at DoubleTree by Hilton Hotel Cedar Rapids Convention Complex. The location is smack dab in the middle of the country, making it really easy to drive or fly to, and there's plenty of parking.

The IAAL board and ALOA Education Department have put together a group of instructors and classes to create a great event for automotive locksmiths.

“  
The IAAL board and ALOA Education Department have put together a group of instructors and classes to create a great event for automotive locksmiths.  
”

My board has put in a lot of time to bring you what I perceive to be the best automotive event of the year. We will have three full days of education and a one-day trade show. You'll also get additional education through a couple of free classes and demonstrations on Saturday. Education ranges from beginner to pro classes, so there is something for everyone. The education is outstanding, as we have recruited the best instructors in the industry to teach.

The vendor list is growing, and all the big distributors and many manufacturers

will be in one room. This is truly the place to be. This is the second event for me as president of IAAL, and I am excited to see it all coming together. Come see us May 14-17, 2025, in Cedar Rapids, IA. Registration is open, and classes will be filling up fast. Registration is available online at [www.aloamembers.org](http://www.aloamembers.org).

If you have any questions, feel free to contact [conventions@aloa.org](mailto:conventions@aloa.org). If you want to book booth space or sponsor a part of the convention, call Kelly Parker at (912) 713-9680 or contact her via email at [kelly@aloa.org](mailto:kelly@aloa.org).



**IAAL President Ed Woods, CML, CPS, CMAL, CAI**, is semi-retired and works at Region Key LLC. He's also an instructor for ALOA and several distributors. He serves as president of IAAL.



# RENEW TODAY!

Renew your ALOA membership today and unlock exclusive convention discounts that can save over \$500 in event pricing in 2025!\*

## RECRUIT

**This special deal expires 12/31/2025!**

Recruit and sponsor a new member(s), and receive 20% off your 2026 dues for each member you sponsor.

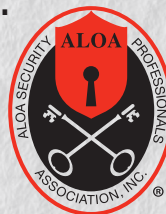
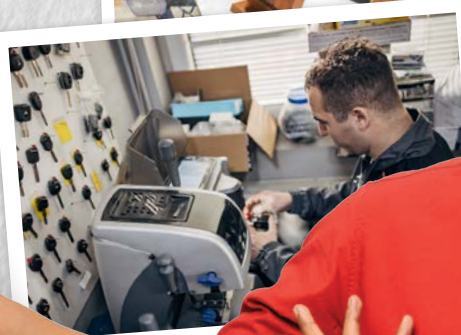
## REWARDS

- ✓ Up to \$500 savings on class pricing\*
- ✓ Free Security Expo entrance with pre-registration
- ✓ Discount pricing on webinars and testing
- ✓ Free Findalocksmith.com listing
- ✓ Exclusive access to member resources
- ✓ Member-only technical support, and
- ✓ Much, Much More!

## REACH OUT

- Call to RENEW 214-819-9733
- Pay ONLINE at [www.aloamembers.org](http://www.aloamembers.org)
- Email [membership@aloa.org](mailto:membership@aloa.org) for questions
- Mail ALOA Security Professionals Association, Inc.  
1408 N. Riverfront Blvd. #303 Dallas, TX 75207

\*To receive the maximum discounts on member benefits savings, attendance at all ALOA conventions or all designated ALOA events is necessary.





# Race to Cedar Rapids for the IAAL Auto Lock Expo!

Get your career on track at this automotive-only event.

**G**ET YOUR MOTORS RUNNING ... the IAAL Auto Lock Expo will be here before you know it! Get your career on track by joining us May 14-17 in Cedar Rapids, IA, for this amazing automotive-only convention. We will have three days of the best automotive education in the industry, a trade show, free education and demos on Saturday, and fun events — including a Lishi escape contest.

Cedar Rapids, IA, is centrally located in the U.S. and easy to drive or fly to. Enjoy plenty of parking at or near the DoubleTree by Hilton Cedar Rapids Convention Complex, plus get a great rate of \$150 per night plus tax and a \$2 per night tourism fee.

## Register and Win!

If you register by April 18, you will be entered into a drawing for a chance to win an amazing prize package worth \$500! Items in the bag include a one-night stay at the Doubletree Cedar Rapids, including breakfast and free parking. You'll also receive a bunch of local-themed items such T-shirts, a golf towel, ice pack travel bag and a Big Grove Brewery gift card.

## Rev Up Your Career

On the following two pages, take a look at the events and classes being offered. There is something for professionals of all skill levels. For those new to automotive work, this is the perfect opportunity to jump-start

your learning! To see the full class descriptions and other information, go to the IAAL Auto Lock Expo tab on [www.aloa.org](http://www.aloa.org). Registration is available online at [www.aloamembers.org](http://www.aloamembers.org).

## Exhibit at the Auto Lock Expo

There is still time to book your exhibit space or secure sponsorships as well! Meet your customers one-on-one, showcase new products and make valuable industry connections. Exhibitors will not only get in-person exposure to automotive audiences, but they will also get visibility in *Keynotes* magazine after the convention.

To find out more or get on board, call Kelly Parker at (912) 713-9680 or email her at [kelly@aloa.org](mailto:kelly@aloa.org).







**AUTO  
LOCK  
EXPO**  
**2025**

RACE TO  
CEDAR  
RAPIDS





## Special Events Badges Required for All Events



### **IAAL 2025 Kick-Off Party**

6:00 p.m., Friday, May 16

This is a don't-miss event! Be sure to attend this party with a great atmosphere to mix and mingle with suppliers and colleagues.



### **IAAL Raffle**

In your tote bag at Registration, you'll receive one raffle ticket. Be sure to hang on to it for the Expo! You can also purchase extra tickets at Registration. Drop the tickets into the barrel at Registration or on the show floor and then listen for your ticket number to be announced to win prizes. Must be present to win.

### **PRP Testing**

7:00 a.m., Saturday, May 17

Take the PRP Testing to earn locksmith certifications that prove that you know what you know. You can become a Certified Automotive Locksmith (CAL), among many other credentials available. Deadline is April 18 to register for the PRP. There will be no on-site test registration.



### **Lishi Escape Contest**

11:00 a.m. to 3:00 p.m., Saturday, May 17

Contestants will be in a simulated escape room where they must use Lishi tools to free themselves from their restraints (a padlock) and the "room" (a deadbolt) and start a "getaway car" (a vehicle ignition lock). Fastest time of each day wins a prize and bragging rights.



### **Demonstrations on Expo Floor**

Several companies will be holding educational demonstrations on the show floor. Learn more about techniques and how to use certain products! Check the schedule at the show for full information and times.

### **FREE Classes at the Expo!**

Several free classes will be held Saturday at the Expo. See the schedule and visit on-site Registration for details. For the two sessions of Intro to High Security Automotive, you must sign up in advance at the Education and Demonstration area on the show floor.

# Class Schedule

Subject to Change

Register online at [www.aloa.org](http://www.aloa.org)



For online registration and class descriptions, visit the IAAL AUTO LOCK EXPO section on ALOA.org. Asterisks (\*) indicate the class has a required lab fee on top of the package price. *Class schedule is subject to change.*

## Wednesday, May 14 (8 a.m. – 5 p.m.) (Half-day classes are 8 a.m. to Noon or 1 p.m. to 5 p.m.)

<b>101A</b>	Truck Lock Key Generation (AM) - Woods	Intermediate
<b>101P</b>	Intro to Auto (PM) - Hoffman	Basic
<b>102</b>	High Security Automotive Locks - Richards & Florko	Basic/Intermediate
<b>103</b>	Automotive Locksmithing Troubleshooting Q&A *\$78 Lab fee (103R) - Finstrom	Basic/Intermediate/Advanced
<b>104A</b>	KR55 (AM) - Sherfield	Intermediate
<b>106</b>	Building and Managing a Successful Retail Locksmith Store - Loni Portie	Basic
<b>107</b>	Mercedes Benz 3-Day Locksmith Workshop (Day 1 of 3) *\$504 Lab fee (107R) - Marte & Jaudon	Intermediate
<b>108</b>	Auto Tips & Tricks - Childress	Basic/Intermediate
<b>109A</b>	BMW, EWS and CAS (AM) - Wright	Basic

## Thursday, May 15 (8 a.m. – 5 p.m.) (Half-day classes are 8 a.m. to Noon or 1 p.m. to 5 p.m.)

<b>201</b>	Revolutionize Your Automotive Expertise: Explore Automotive Control Units & Hands-On (Day 1 of 2) - Jafar & Assist.	Intermediate
<b>202</b>	Asian Automotive Locks - Richards & Florko	Basic/Intermediate
<b>203</b>	What Happens When the Key Code Doesn't Work? Q&A *\$78 Lab fee (203R) - Finstrom	Basic/Intermediate/Advanced
<b>204</b>	Introduction to OEM Software for Key and Module Programming - Suggs	Basic/Intermediate/Advanced
<b>205</b>	Auto Tools & Programming 101 - Childress	Basic
<b>206A</b>	VW Ignition (AM) - Portie	Basic
<b>206P</b>	Sightreading (PM) - Portie	Basic
<b>207</b>	Mercedes Benz 3-Day Locksmith Workshop (Day 2 of 3) - Marte & Jaudon	Intermediate
<b>208</b>	Fundamentals of Soldering: Automotive (Day 1 of 2) *\$180 Lab fee (208R) - Lornklang	Basic
<b>209A</b>	Subaru, Not OBD (AM) - Skinner	Intermediate/Advanced
<b>209P</b>	GM 6-Cut (PM) - Woods & Sherfield	Intermediate

## Friday, May 16 (8 a.m. – 5 p.m.)

<b>301</b>	Revolutionize Your Automotive Expertise: Explore Automotive Control Units & Hands-On (Day 2 of 2) - Jafar & Assist	Intermediate
<b>302</b>	Honda Lock Repairs and Service - Richards & Florko	Basic/Intermediate
<b>303</b>	Digital Marketing and Advertising for the Auto Locksmith - Howell	Basic
<b>304</b>	BMW Key Programming ACDP and Other Tools - Suggs	Basic/Intermediate/Advanced
<b>306</b>	VW Programming - Crocker	Basic/Intermediate
<b>307</b>	Mercedes Benz 3-Day Locksmith Workshop (Day 3 of 3) - Marte & Jaudon	Intermediate
<b>308</b>	Fundamentals of Soldering: Automotive (Day 2 of 2) - Lornklang	Basic
<b>309</b>	Jaguar/Land Rover - Skinner	Intermediate/Advanced

## Saturday, May 17 **FREE CLASSES AND DEMOS! MORE TO COME ...**

Motorhome and Camper Locks - Agius (8 a.m. to 9 a.m.)

Basic

### **FREE CLASSES AND DEMOS ON THE SHOW FLOOR**

Hands-On High Security Truck Lock Pinning - Baker (10 a.m. to 4 p.m. at the Expo. No registration needed)

Basic

Intro to High Security Automotive - Brandt (Two sessions: 10:30 a.m. to 12:30 p.m. and 1:30 p.m. to 3:30 p.m. at the Expo.)

Basic

For this class, sign up at the Education and Demonstration Area on the show floor in advance.

For questions, call us at (214) 819-9733 or email [conventions@aloa.org](mailto:conventions@aloa.org).



# Education and April Are on the Way ...

...and sooner than you may think.

By ALOA SPAI Director of Education William M. Lynk, CML, CPS, ICML, CMIL, CAI, M.Ed.

**T**HE ALOA EDUCATION Department has been working on not only one but *three* conventions simultaneously.

SAFETECH in Lexington, KY, is the first one, which will be held April 7-12. If you haven't registered, do it now. It is no doubt the country's finest convention covering all things safe-related. More on that in a bit.

We are also planning the IAAL Auto Lock Expo to be held in Cedar Rapids, IA, May 14-17, as well as the yearly ALOA Convention & Security Expo August 3-9 in Orlando, FL. Obviously, you have multiple opportunities to fine-tune your education with the best instructors the world has to offer.

## SAFETECH

Even if you are not a "safe techie," here is your chance to mingle with those in the know. I have had the pleasure of working with SAVTA (Safe and Vault Technician's Association, a division of ALOA) President Gene Gyure, CRL, CAI, and am thrilled that he and the SAVTA Board collaborated with the education team to craft a schedule of classes that is second to none. Again, if you are new to this lucrative field, they will walk you through — from the first steps to advanced classes — if you are willing. Here is a sampling of the educational

offerings from SAFETECH 2025:

### Mechanical Combination Lock Fundamentals

Instructor: Mike Potter, CPS, CAI

Level: *Beginner*

Content: 20% Lecture/80% Hands-On

Getting into the world of safe and vault servicing? Establish the proper foundation by learning the basics, including proper combination, servicing and troubleshooting common issues, as well as some basic non-drilling entry techniques. The class is one day and is strictly limited to 12 students.

### Spiking Electronic Locks

Instructor: Lance Mayhew

Level: *Beginner*

Content: 50% Lecture/50% Hands-On

This class covers electronic safe lock spiking, which can be used to "hot-wire" many locks and open them through the spindle hole. The class is a mixture of hands-on training and conventional classroom instruction. Students will start by building their own probes using the provided tools and materials. Then, during the lecture portion, they will use their new probes as they learn how to spike sample locks in several different ways. We will cover different aspects of electronic locks, including circuit board construction, component identification,

spike targets, and the different types of spike circuits and how to use them. LA GARD and SecuRam swing bolts are used to teach the main principles. Other locks will be available for students to practice with if time permits.

### Manipulation (Two-Day)

Instructor: Elaad Israeli, CRL, CFL, CPS, CAI, CFFDI, LSFDI

Level: *Advanced*

Content: 40% Lecture/60% Hands-On

Prerequisite: Completion of Basic Group 2 Safe Lock Manipulation and field successes OR competency in manipulation. Must bring an AMP to class.

This advanced class is not for novice manipulators. You must bring or buy an amp. It is designed to make good manipulators more successful and more profitable. As a prerequisite, attendees should have already received formal training on the subject (i.e., have completed the Basic Manipulation course) and should have had successful field experience. The content of the class will include diagnostics and identification, time reduction, tricks and tips, tools and aids, and advanced defeat methods for combination locks. The primary focus will be the LA GARD 3330. However, other locks that cause the manipulator difficulty will be covered, as will a collection of common antiques and notables.

A young girl with light brown hair tied in a small ponytail is shown in profile, looking towards the left. She is wearing a light pink dress and a brown backpack. She is holding several books against her chest. The background is a dark, out-of-focus interior space with wooden paneling.

# Her safety depends on you.

Don't let illegal key  
duplication be a liability.

---

Learn more at [medeco.com](https://www.medeco.com)

---



## IAAL Auto Lock Expo

If your interest is “everything automotive,” then your dream convention is coming in May! In conjunction with the IAAL (International Association of Automotive Locksmiths, a division of ALOA) Board — including IAAL President Ed Woods, CML, CPS, CMAL, CAI — the ALOA Education Department has been planning this convention to offer a wide variety of automotive training. Classes will be packed, as usual, so sign up early! Here is a smattering of what you will encounter:

### Intro to Automotive (Afternoon 1/2 Day)

*Instructor: Stephen Hoffman, CMAL, CAI*

*Skill Level: Beginner*

*Lecture: 100%/Hands-On: 0%*

*Max Students: 25*

This course will go over automotive key generation, from single-sided GM keys to the introduction of VATS, transponder keys, remote keys, and proximity remotes. We will cover OBD key programming equipment, transponder cloning devices, transponder ID and touch on transponder manipulation. Mechanical and automatic key machines will also be discussed.

### Mercedes Benz 3-Day Locksmith Workshop

*Instructors: Jason Jaudon, CMAL, CAI and Rafael Marte, CAI*

*Skill Level: Intermediate, Advanced*

*Lecture: 60%/Hands-On: 40%*

*Max Students: 20*

*Prerequisite: Student should understand how immobilizer systems function and be familiar with terminology related to components and functions.*

This three-day class is designed to further educate experienced automotive locksmiths on Mercedes-Benz



immobilizer key systems. Attendees will receive an overview of different Mercedes immobilizer systems, IR Key programming procedures and EIS Module identification. Students will be familiarized with XHorse VVDI MB, Autel IM608 and Abrites programmers during the FBS3 key origination and programming demonstrations. This course is approximately 40% hands-on, and students will have the chance to pick and decode MB 10-Cut locks with a Lishi pick and get an up-close view of the Chrysler Crossfire ignition lock repair. Other material includes EIS/ELV removal and the ELV emulator programming process.

### ALOA 2025 in Orlando

Join us in Orlando for the industry's premium security event, ALOA 2025. There will be a fantastic menu of educational classes, ranging from general locksmithing and forensics to institutional, safe and vault, and automotive. It will be quite a smorgasbord of the top classes offered to both develop your skill set and increase your income. A few class titles include:

Advanced Breaking and Entry, Servicing Aluminum Storefront Doors & Hardware, Effectively Running Your Locksmith Business, Revolutionizing Your Auto Experience, Soldering

Fundamentals for Automotive, Small Format IC, Advanced Master Keying, Electronic Safe Lock Opening and Servicing, Low Voltage Electronic System Wiring & Basic Troubleshooting, Basic Forensic Tool Marks for Investigative Locksmiths, Certified ACE Instructor Training, S&G: E-Locks - Hardware, Language, Programming & Service, High Security Cylinder Analysis, Active Intruder Security and Codes, AFDI Fire Door Inspector Training with Exam, along with a plethora of other exciting classes.

Those classes were highlighted to whet your educational appetite and for you to see how ALOA is always packaging the very best in security training for you.

### What's Next?

So, you may be asking yourself, “What do I do now?” Well, you can answer yourself: “Register for SAFETECH in Lexington!” That's the first step to begin your exhilarating voyage into education, networking and fun. As an ancient Chinese proverb says, “A journey of a thousand miles begins with a single step.” 🚀



**ALOA SPAI Director of Education William M. Lynk, CML, CPS, ICML, CMIL, CAI, M.Ed.,** has been a locksmith since 1975 and is the owner of

[www.ICLSglobal.com](http://www.ICLSglobal.com). Bill is an IC specialist, an industry author, the subject matter expert on IC for ALOA, and an ALOA ACE instructor, teaching classes on interchangeable cores and master keying across the country. He has originated SFIC Technical Manuals for both national and international lock manufacturers, and maintains a working relationship with the major lock and security manufacturers throughout the world. In 2013, he was named *Keynotes* Author of the Year.



# ALOA

## ALOA Security Professionals Association, Inc.

# Membership Application

### CANDIDATE PLEASE TYPE OR PRINT

Name: ☐ Mr. ☐ Mrs. ☐ Ms. First \_\_\_\_\_ Last \_\_\_\_\_ MI \_\_\_\_\_ Designation \_\_\_\_\_

Business Name \_\_\_\_\_

Mailing Address \_\_\_\_\_

City \_\_\_\_\_ State \_\_\_\_\_ Zip Code \_\_\_\_\_ Country \_\_\_\_\_

Work Phone \_\_\_\_\_ Home Phone \_\_\_\_\_ Fax \_\_\_\_\_

Email Address \_\_\_\_\_ Website \_\_\_\_\_

Date of Birth (required) \_\_\_\_\_ Place of Birth \_\_\_\_\_ Social Security # (required) \_\_\_\_\_

US Citizen? ☐ Yes ☐ No If No, citizen of what country? \_\_\_\_\_

ALOA occasionally makes its members' addresses (excluding phone numbers and email addresses) available to vendors who provide products and services to the industry. If you prefer not to be included in these lists, please check here: ☐

### PROFESSIONAL INFORMATION

Please check the description that best describes you (check all that apply)

- |  |  |   |
|--|--|---|
| <input type="checkbox"/> Locksmith Owner     | <input type="checkbox"/> Automotive            | <input type="checkbox"/> Employee Technician              |
| <input type="checkbox"/> Electronic Security | <input type="checkbox"/> Security Professional | <input type="checkbox"/> Mechanical Door Locks & Hardware |
| <input type="checkbox"/> Institutional       | <input type="checkbox"/> Safes                 | <input type="checkbox"/> Investigative                    |
| <input type="checkbox"/> Other _____         |  |   |

Are you licensed to perform Locksmith/Access Control work in your state? ☐ Yes ☐ No If Yes, License # \_\_\_\_\_

Business License # \_\_\_\_\_ EIN # \_\_\_\_\_

Any other license held by applicant (Contractors Lic., Low Voltage) \_\_\_\_\_

Any other states you do business in and licenses held in those states \_\_\_\_\_

List all phone numbers used by your company/companies: \_\_\_\_\_

Number of Employees \_\_\_\_\_ ☐ Store Front Business ☐ Mobile Only

How did you learn locksmithing/access control? \_\_\_\_\_

How long have you worked in the locksmithing/security industry? \_\_\_\_\_

ALOA member Sponsor Name/Who introduced you to ALOA?

Sponsor Name (Required) \_\_\_\_\_ ALOA Number \_\_\_\_\_ Years known \_\_\_\_\_

Have you ever been a member of ALOA before? ☐ Yes ☐ No If Yes, when? \_\_\_\_\_ ID #, if known \_\_\_\_\_

Are you a member of any local locksmith association? ☐ Yes ☐ No If Yes, name of association: \_\_\_\_\_

Give the names and phone numbers of two industry-related references:

Name \_\_\_\_\_ Company \_\_\_\_\_ Phone Number \_\_\_\_\_

Name \_\_\_\_\_ Company \_\_\_\_\_ Phone Number \_\_\_\_\_

**IMPORTANT:** Have you ever been convicted of a felony? ☐ Yes ☐ No If yes, please give details on a separate sheet.

All convictions are reported to the Advisory Committee for review.

A routine background check is performed on all new applicants, unless you live in a State in which passing a background check is a part of the licensing requirements. Non-US citizen background checks are required. If you live in a country that does not allow third party background checks, you will be required to submit an authentic report upon request (no copies/duplicates allowed) before final membership approval can be granted. A copy of your business permit/license, license number, business card, company letterhead or suitable proof of employment in the locksmith/access control business must accompany application.



## TYPES OF MEMBERSHIP AND REQUIREMENTS

Check only one box from the categories listed below:

### Active Membership

Persons actively engaged in the locksmith/access control industry for a minimum of two years and have achieved one of ALOA's recognized program designations.

- |  |       |  |       |
|--|-------|--|-------|
| <input type="checkbox"/> US and US Territories | \$285 | <input type="checkbox"/> I elect to Go Green | \$240 |
| <input type="checkbox"/> International         | \$295 | <input type="checkbox"/> I elect to Go Green | \$210 |

### International Association of Investigative Locksmiths Membership

Must be an ALOA Member in order to join the IAIL.

- |  |      |
|--|------|
| <input type="checkbox"/> US and US Territories | \$65 |
|--|------|

### Probationary Membership

Persons undergoing training to qualify as an Active member, who have not received one of ALOA's recognized program designations. No person shall be a probationary member for more than three years.

- |  |       |  |       |
|--|-------|--|-------|
| <input type="checkbox"/> US and US Territories | \$285 | <input type="checkbox"/> I elect to Go Green | \$240 |
| <input type="checkbox"/> International         | \$295 | <input type="checkbox"/> I elect to Go Green | \$210 |

### Probationary Membership – No Sponsorship Required

Persons undergoing training that are new to the industry and do not know any Active member for sponsorship. Probationary period extended from 90 days to one (1) year. Probationary status lifted if sponsor acquired within year. Must obtain license if residing in State requiring licensure. A second background check will be performed by ALOA after 2 years of the 3 year maximum term. Any violation of ALOA Code of Ethics during probationary period will result in immediate termination of membership.

- |  |       |  |       |
|--|-------|--|-------|
| <input type="checkbox"/> US and US Territories | \$285 | <input type="checkbox"/> I elect to Go Green | \$240 |
| <input type="checkbox"/> International         | \$295 | <input type="checkbox"/> I elect to Go Green | \$210 |

### Allied Membership

Persons whose position in the locksmith/access control industry relates to locksmiths, and cannot qualify for any other class of membership.

- |  |       |  |       |
|--|-------|--|-------|
| <input type="checkbox"/> US and US Territories | \$285 | <input type="checkbox"/> I elect to Go Green | \$240 |
| <input type="checkbox"/> International         | \$295 | <input type="checkbox"/> I elect to Go Green | \$210 |

Note: Your application will be processed with a 90 day waiting period.

Any institutional locksmith not using his/her work address must submit a letter from employer stating that you are an institutional locksmith.

## DUES AND FEES

An application fee and the appropriate dues must accompany the application in order for processing to begin.

Application Fees Schedule:

US and US Territories .....	\$80
Canada, Denmark, Ecuador, New Zealand.....	\$170
Australia, Bahamas, Barbados, Belgium, Belize, Bermuda, China, France, Haiti, Philippines, UK .....	\$210
Israel, Korea, Papua New Guinea, Saudi Arabia, United Arab Emirates .....	\$360

Applicants from countries not listed must submit background check and report from local Law Enforcement with application.

## FINAL CHECKLIST

- |   |       |
|---|-------|
| <input type="checkbox"/> Required Proof of Employment in Industry | _____ |
| <input type="checkbox"/> Annual Dues Amount                       | _____ |
| <input type="checkbox"/> Application Fee                          | _____ |
| Total Amount Due  | _____ |

## METHOD OF PAYMENT (Effective 2/1/2024 there will be a 3% surcharge on all credit card payments.)

- ☐ Check   ☐ MasterCard   ☐ Visa   ☐ American Express   ☐ Discover

Card Number \_\_\_\_\_ Expiration Date \_\_\_\_\_ SEC \_\_\_\_\_

Print Name on Card \_\_\_\_\_

Signature \_\_\_\_\_ Date \_\_\_\_\_

I understand and consent that in the course of reviewing this application ALOA may review publically available information for the purpose of verifying the information submitted and do a background check.

I certify that all statements are true and, if accepted as a member, I agree to abide by the rules, regulations, and Bylaws of ALOA, and further agree to adopt the Code of Ethics of ALOA as my own, and adhere to it to the best of my ability. Should my membership be discontinued, I agree to return my membership card and cease use of all ALOA insignia.

Signature \_\_\_\_\_

Date Signed \_\_\_\_\_

Dues, Contributions, Gifts are not deductible as charitable contributions for Federal income tax purposes. Dues payments are deductible as an ordinary and necessary business expense. However, donations made to the Legislative Action Network ARE NOT deductible as a charitable gift or business expense.

### Return to:

ALOA, 1408 N. Riverfront Blvd #303, Dallas, TX 75207  
Fax (469) 453-5241 • Email: [membership@aloea.org](mailto:membership@aloea.org)



# IALIL Strategic Update

**W**HAT IS OUR DIRECTION? What are we planning for 2025? How are we doing?

Membership in IAIL is up roughly 12% from last year. However, as a long-term trend, membership is essentially flat. This actually is an improvement over larger demographic trends of decline in industry and association participation in general.

This is an existential threat for associations such as ALOA. We are making this IAIL's prime objective — to demonstrate relevance — as fewer and fewer individuals find value in the traditional models of association participation.

We plan to grow relevance in three main ways:

**Education.** We have a unique market advantage for forensic locksmithing. *Nobody* else is doing this. (This is an

argument for you to get involved as well!) We need to expand our messaging to attract the practicing investigative trades as a whole. Professional investigators joining our ranks can bring expertise and viability to IAIL. We have a very good array of classes to be very proud of, and we are working to expand who we offer these to: internationally, to government, law enforcement and other areas outside our industry.

**Certification.** Similarly, with its rigorous requirements, the CFL program has been set up to be a highly respected and valued credentialing service. The more we can attract professionals to participate, the wider the recognition and value will be.

**Tools and Resources.** IAIL will continue to expand its value through tools and resources for its members. This



We are making this IAIL's prime objective — to demonstrate relevance — as fewer and fewer individuals find value in the traditional models of association participation.



includes shared expertise, networking, informal education, referral services, standardized forms and procedures, and regular webinars.

Let us know if you have additional suggestions or if you want to get involved to help. I am optimistic for the future of IAIL and its members. But, as with most things, you will get out of it what you put into it.

See you at SAFETECH and/or ISC West! 📍



Clyde T. Roberson, CML, AHC, CPP, CMST, CFMST, AMKS, is President of the International Association of Investigative Locksmiths. Email him at

[ialipresident@aloe.org](mailto:ialipresident@aloe.org).

## GET PUBLISHED!

IALIL members: Submit your articles for the Investigative Spotlight department. Send your information to Tom Demont at [thomas@assatechnicalservicesinc.com](mailto:thomas@assatechnicalservicesinc.com).





# No Card, No Problem

If you find yourself without an HPC card, here's what to do.

By Brandon Whigham, CMAL

*Disclaimer: The manufacturer of the GM 10 cut lock states the spring caps cannot be removed and replaced. This technique is a demonstration of how solutions can be found for problems in the field. This is a walkthrough of a way to make HPC cards in the field for a temporary solution.*

**T**HROUGHOUT A CAREER IN any field, there are tricks of the trade that are learned and often not written down. Many times, these tricks of the trade come from hard lessons learned. Whether the lessons come from

forgetfulness or just bad luck does not really matter. What does matter is how we respond to the problem. We can let it defeat us, or we can find a solution and keep going.

When I first started working as a full-time automotive locksmith, a frequent problem I had was not having the right HPC card to cut keys on. I did not even have a set of HPC cards to use. In fact, the first HPC machine I had did not even have the plastic cover to read the dials through. While it made the beginning a little rough, it made me a better locksmith. These kinds of hardships taught

me some valuable life lessons, and not just for locksmithing. I had to learn how to make lemonade from lemons in many situations. It is amazing to see how creative you can be when you have a job to do, and you must figure out a way to do it. Here is the way I figured out the HPC card situation.

## Figuring It Out

The first thing to do is to get the lock to your work area. If it is a sidebar type of lock, some sidebar manipulation will be required. Fortunately, these days we have Lishi 2-in-1 Pick and Decoders we can use. When I was starting out, I did not have anything like that. I had to pick every lock with hooks and rakes or remove it in some other way. For door locks, the plug type of door lock was always a welcome sight.

Once the lock is back at your work area, you must disassemble it all the way down to the wafers. For locks like the GM 10 cut (B102) type, there is a spring cover that needs to be carefully removed without breaking a leg off of it. When disassembling this type, great care must be taken. If one of the legs breaks off in the lock, you will have to replace the entire cylinder. Other locks with spring covers are not as difficult to deal with. The early Ford Focus locks are an example of this.

Once you have the lock disassembled down to the wafers, write down the number stamped on each wafer. This number correlates to the depth of the cut and will



**FIGURE 1.** Begin by getting the lock to the work area. In this case, a little sidebar manipulation was required. This is the GM 10 cut (B102) type.





**FIGURE 2.** This is an example of the GM 10 cut (B102) type. Here, we see the sidebar extended and the spring cap. Be careful not to break the legs of the spring cap.



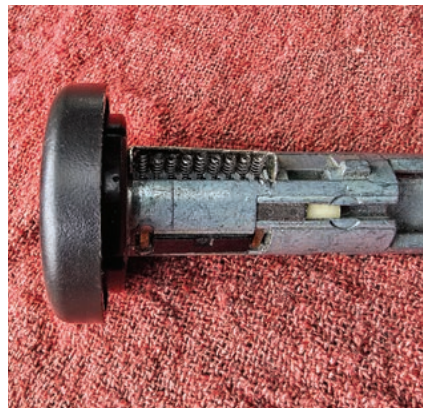
**FIGURE 3.** In this picture, the author has started slowly removing the spring cap. Notice he is not lifting either side too much.



**FIGURE 4.** It helps to lift the spring cap from both sides. This will help release both legs at the same time.



**FIGURE 5.** The spring cap is almost completely out at this point. From here, the author feels confident about getting it off without breaking it.



**FIGURE 6.** The spring cap has been removed enough to see the springs underneath. Try not to damage the springs as you lift the spring cap. It isn't the end of the world, but it will make reassembly easier.



**FIGURE 7.** The spring cap is completely removed, and all springs are exposed. The next step is to remove all of the springs.

be a convenient shortcut later in this process. Not all locks have marked wafers, so having these numbers is not required; it will just save you time. To add a little wrinkle to the situation, not all depths go from 1 down. There are some locks where a 0 is a no cut, and still others where the higher the number, the less of a cut. For Toyota, a 4 is a no cut. The reason I am mentioning this is to show the importance of following the process. If you do it correctly and write down what you find, you should be able to get a working key without having to perform the process for each wafer in a lock.

## Finding the Spacing

Finding the spacing of the key can be a bit more challenging, but not by much. The first thing to do is to insert a blank key into the lock. From there, use a broken lock pick or other sharp instrument that will fit and score the key blank. For this step, try to get the score mark as close to the exact center of the wafer chamber as you can. This will help when we start mapping out the center of the cut. You will notice as you place more marks, they tend to have uniform spacing. This can be a point to troubleshoot later if needed. If your spacing marks are

not very uniform in their distance from one another, note which ones are out of place. This will help during the next step.

Because you are transferring the exact location of a wafer contact point, there is not much to worry about, but there are some things to be aware of. It is important to know that not all cuts of a key will have a space in every lock cylinder. The same GM 10 cut (B102) type we discussed earlier may be missing the first cut or the 10th cut. There are examples of both versions out there. Scoring the key blank with a broken pick will make it obvious which one is





FIGURE 8. All springs are out of the lock, and the next thing to do is to start extracting wafers. Use a key blank to make this job quite a bit easier.



FIGURE 9. The author has stuck a key blank into the lock, which causes all of the wafers to raise as much as possible. In this photo, you can see the wafers in their individual chambers.



FIGURE 10. Often, using a key blank will not cause the wafers to raise enough. In that case, a large hook pick like the one here is exactly right for the job.



FIGURE 11. At this point, the author has the lock completely disassembled and has the wafers in order. Keeping them in order is very important.



FIGURE 12. The wafers are laid out in the same order they came out of the lock, and the author will be marking the key with a broken pick.

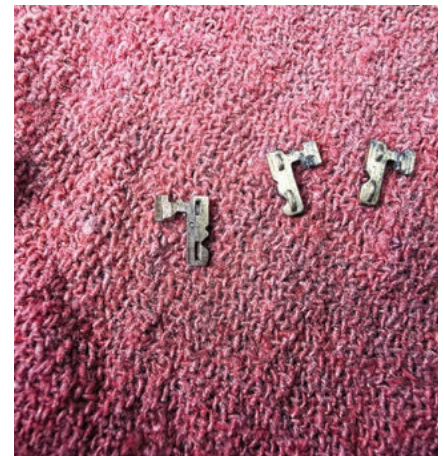


FIGURE 13. This is a close-up view of the number stamped on the wafer. This is the number you should write down to keep them in order.

missing. Toyota 10 cut door locks will be missing cuts 1 and 2.

Cuts missing from the tip of the key will be more obvious than cuts missing from the bow of the key. Chrysler locks using the Y157 have 7 cuts, and all 7 are in the door. Chrysler locks using the Y159 have 8 cuts, and the last 7 cuts are in the door. Knowing these variations makes a difference when you are in the field. I recommend using some sort of reference material to tell you how many cuts are in which type. *Fast Facts* and *Auto Smart* are both excellent resources for this information.

## The Main Focus

Here is the real meat and potatoes of this process. If you wanted to skim through the article to just get to where the magic happens, stop at this section.

To start this process, start by using any other HPC card you have and flip to the back of it so you have a light background to work with. If you do not have any HPC cards at all, you can use paper. You could use anything that will fit into the slot at the top of the HPC machine. The only requirement is that it does not move once it is in place.

Start by verifying what cutter you

need to be using to cut that key type. The CW1011 is the most-used cutting wheel, but Honda cars use the CW47 due to the steeper cutting angle.

Once you have the correct wheel attached, seat the scored key blank into the jaw and carefully line up the cutting edge of the wheel as close as you can to the center of the score mark you made earlier. This step is the reason it was important to score the key blank in the middle of the wafer chamber. When you have it correctly lined up, use a pen to place a line on the clear plastic window of the HPC machine. I have found the





# **AUTO LOCK EXPO 2025**

RACE TO  
CEDAR  
RAPIDS

***Get Ready to Floor It.***

***May 14–17, 2025***

***Cedar Rapids, Iowa***





FIGURE 14. Here are the numbers from the wafers. These are the cut depths to use when starting to cut the key.



FIGURE 15. The key blank is inserted in the lock, and you can see the marking tool the author will be using to make marks on the key blade.



FIGURE 16. Notice the orientation of the key in this image. It is important to mark the key closest to you so you can see the marks when setting up the HPC machine.



FIGURE 17. The author has made a mark on the key using each of the nine chambers. They are fairly uniform in spacing.



FIGURE 18. Now take the key to the HPC machine and line up each mark you made with the broken pick. As you line up each mark with the center of the cutting wheel, make a mark on the plastic of the machine.



FIGURE 19. Use either a white sheet of paper or the back of a different HPC card to get a light surface so your marks will stand out.

Pilot Precise brand of pens to write the best on the plastic window. Do *not* use Sharpie markers — the marks will be exceedingly difficult to remove. Continue placing marks at every space where you have a mark on your key blank. This information is now the same thing as having a card with the spacing. Again, it is important to know the total amount of cuts on the key and how many you have.

To find the depth part of the card, start with a no-cut. It is important to know how the manufacturer labels their parts, but you can call it anything you want as long as you stay uniform with it.

This is the reason you marked down the numbers of the cuts when disassembling the lock earlier.

After you have marked a no cut, find the next depth. In most cases it will be a 2, but it may be a 3. Either way, find a location where that is the case. Insert the wafer back into the lock housing with its spring. Use the spacing marks to align the cutting wheel with the center of the score mark you made earlier. Begin cutting the key slowly. It is normal to cut a little and then check your work. You want to go slow here to avoid cutting too deep.

When your cut matches the depth of the wafer, place a mark in the cut depth section of the plastic face of the HPC machine, and label it. If the lock you are working with is a sidebar type, place the mark at the depth where the sidebar is at its most-collapsed point.

## Finishing Up

Continue this process until you have all the possible depths marked out. Again, you should notice the marks are a uniform distance from each other. When you finish this process, you should have created a card for that key type.





# SAFETECH

## 2025



**Classes**  
April 7-11, 2025



**Trade Show**  
April 12, 2025



**Griffin Gate Marriott**  
Lexington, Kentucky

**REGISTRATION  
NOW OPEN!**

See [SAVTA.org](http://SAVTA.org) for  
class information  
and to register.







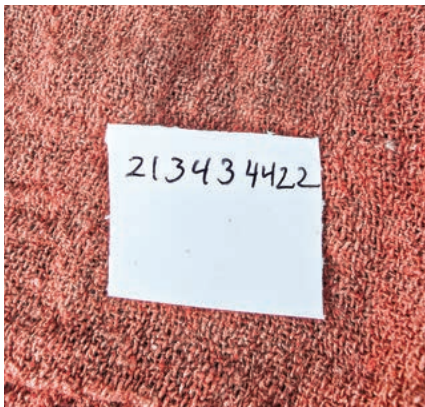
**FIGURE 20.** Here, you can see where the author has lined up the space for the first mark on the key and placed a mark in ink. The author prefers a Pilot Precise. Don't use a Sharpie.



**FIGURE 21.** The author continued making ink marks on the plastic to reference where he placed the marks on the key earlier.



**FIGURE 22.** Keep going until all nine marks have been transferred over. Now do the depths.



**FIGURE 23.** Time to find the different depths. In this case, a one is a no-cut. To make this mark, just move the depth dial until the cutting wheel just touches the key, and transfer that mark over as a one.



**FIGURE 24.** Here is where the 1 depth mark will be. This is the depth that the cutting wheel just touches on the edge of the key blade.



**FIGURE 25.** Since there is a 2 depth in the first chamber of the lock, do that one next.



**FIGURE 26.** All that is required is to place only that wafer in the lock and start cutting little by little until the sidebar stays completely collapsed.



**FIGURE 27.** Here, you can see the sidebar down completely. This depth is correct. Now place a mark on the HPC machine to reference it.



**FIGURE 28.** Here are the correct depths for the first and second spaces. Now we have 1 and 2; we just need 3 and 4





FIGURE 29. When the author confirmed he had the second depth correct, he placed a mark on his machine.



FIGURE 30. Each time the author determines a new depth, he verifies the sidebar is completely collapsed. As long as it is, he places a mark on the machine.



FIGURE 31. Here, the author has cut the third depth and marked the machine.

After you have all your marks placed on the face of the HPC machine, you can now reassemble the lock and reinstall it in its location.

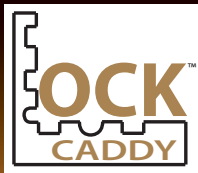
While this information could be saved for future uses, this is primarily a temporary solution for any situation where you find yourself without the

proper card for a specific vehicle. I found this technique most useful with the Hyundai/Kia line of keys. They use multiple different cards for the same key type, depending on the number of cuts and how they label the cuts.

Automated cutters are taking over key cutting, and the need for this method is not

as high as it was a decade ago. The point is to show you another way, but there is a more overarching concept at play here.

If you were to boil down what locksmiths do, we solve puzzles. Just like the example I have laid out here, sometimes we need to create a solution to get to the puzzle we want to solve. This same



*Designed by a Locksmith*

# SAVE TIME

*LockCaddy™ Streamlines Your Work from Shop to Job Site*

## INTRODUCING THE LOCKCADDY® CRADLE™

### EASY PINNING AND SERVICING

- Conventional, LFIC, and SFIC styles with unique design features to securely hold cylinders for servicing
- Conveniently stores keys and parts
- Durable, lightweight and portable, and may easily be secured to a workbench

Locks, keys and accessories are not included.



**ORDER NOW**

**[www.lockcaddy.com](http://www.lockcaddy.com)** See all the features in our online videos.





**FIGURE 32.** This is what it will look like if you do not have the depth set correctly. The sidebar here is quite high, and the lock will not turn.



**FIGURE 33.** Here is when the author found the fourth and last depth. He marked it on his machine and now has a full setup for cutting the keys.



**FIGURE 34.** The author now has a key where he can replicate the cuts over and over because he's using the plastic screen of the HPC machine just like an HPC card.



**FIGURE 35.** After the author has finished making as many keys as he needs of any biting, he can clean the machine with just a little carburetor cleaner and a shop rag.



**FIGURE 36.** Here, you can see that the author has successfully cut a key using the markings on the HPC machine. This side is the same side he used to mark out the spaces on the key.



**FIGURE 37.** The author has turned the key over and cut the other side using only the marks on the HPC machine. As you can see from this picture, the cuts match, and the key is finished.

overarching concept manifests itself when we make our own tools or implements. We see problems, and we find ways to deal with them. Sometimes it is a technique, sometimes it is a tool, and sometimes it's both.

Occasionally, someone produces a solution so good they can market it. Look at the HU100IRT line of tools from LockTech. They took an idea, made the tools, and marketed them. Their tools are excellent, and I have many of them. This attitude of "I can and will conquer all the obstacles in front of me" is the hardest part to teach to others. It is just

a simple "never say die" attitude.

When you find yourself in a situation where the answer is not obvious, or it does not follow the prescribed technique, take some time to figure out another way. This is not limited to the mechanical side of the trade. There will be many problems you will face in the field. Some solutions will be as complex as the one demonstrated here, or as simple as realizing a Nissan NI07 has the same chip as the 2022 Kia Soul. When we flex the creative parts of our brain, we can find solutions we did not know were there. That is the

biggest difference between a novice and an expert. 🛠️



**Brandon Whigham, CMAL**, is a second-generation locksmith who started working in the industry in 1997. He also worked as a private investigator for an insurance fraud investigation firm. In 2011, he opened his own business focusing solely on the automotive side of the locksmith industry. Since then, he has earned his CAL and CMAL credentials and continues to service the Triad area of North Carolina.

# Products & Services Guide

**BIG RED**  
**SAFE LOCKS**

*"Big Red, The Safe Lock With The Red Wheels"*

Our CDL -3 Lock Series Most Durable Mechanical Safe Lock Ever Made Fully Documented

531,232 cycle openings in 35 days.

SAUCEDO banner  
McDONALD DASH MBA USA  
LOCKMASTERS HE Mitchell

(877) 423-8073 • [www.bigredsafelocks.com](http://www.bigredsafelocks.com)

AUTEL MAXIIM

**LAND ROVER STYLE**

PREMIUM MAXIIM IKEY NOW AVAILABLE

PN: IKEYLR5TPA

1.855.288.3587 | [AUTEL.COM](http://AUTEL.COM) | FOLLOW US @AUTELTOOLS

**SECCLOCK**

**Every piece matters.**  
That's why you partner with **SECCLOCK**.

SECCLOCK.com  
800.847.5625

For information about advertising in the **Products & Services Guide**, please contact Adam Weiss at (817) 908-7827.

**TECHNICAL ASSA SERVICES, INC.**

Deadbolts Locks Padlocks Auxiliary Locks Keys  
Mortise Locks Mortise Levers Window Locks Cylinders Restricted & High Security Interchangeable Core

Sales@assatechnicalservicesinc.com  
[www.assatechnicalservicesinc.com](http://www.assatechnicalservicesinc.com) | 724-969-2595 Office

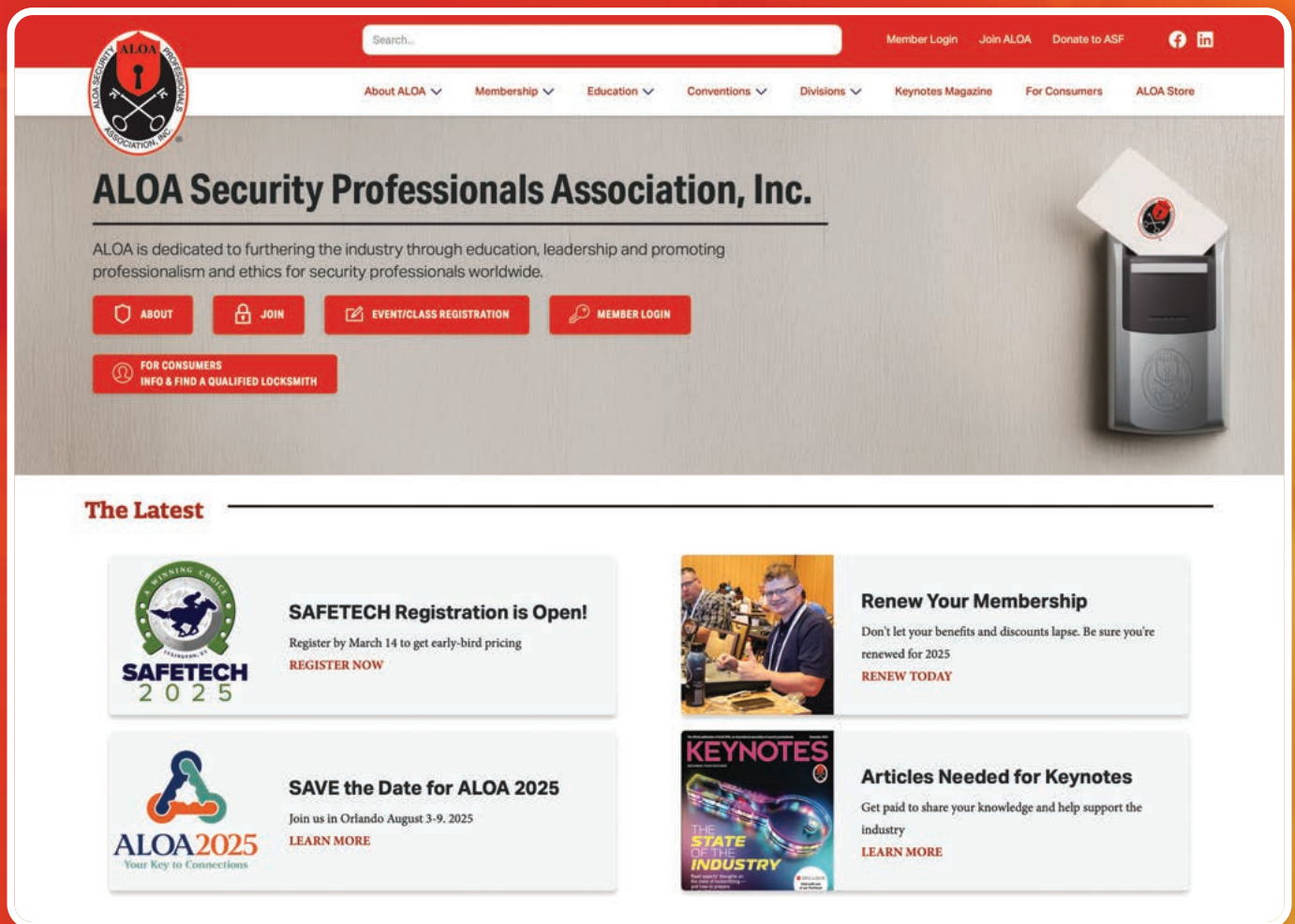
**YOUR AD  
HERE!**



# Introducing the **New** ALOA.org

Get the story behind the website project  
and a sneak peek before it launches.

By **Vernon Kelley, CFI, CFFDI, CFL,**  
**CMIL, CPL, ICML, IFDI, LSFDI, and**  
**Wendy Angel, Keynotes editor**



A priority was creating a homepage that is clean and easy to navigate.

**S**OME THINGS IN THIS world age well with time: red wine, cast iron cookware, whiskey and wood furniture, to name a few. But websites? Not so much.

An urgent message was sent from the year 2007 to the ALOA Board of Directors: “We want our website back!” And so began the long and adventurous journey to redesign and significantly improve the ALOA Security Professionals Association, Inc., website, ALOA.org.

The old ALOA website was many years past its prime. It was difficult to navigate and confusing with many links to old programs or partnerships, or just lacking information in the right places. The poor user experience was even more evident when accessing the website using a mobile device. The time had come for a much-needed overhaul.

During the 2024 ALOA Convention and Security Expo in Las Vegas, there was much talk among attendees, members, and board members concerning the lack of functionality and the outdated design of ALOA.org. During the Board of Directors meeting that followed, many board members requested that action be taken to bring the website up to today’s design standards. That request was made a reality with the creation of a Website Redesign Committee by the ALOA president and the chairman of the board.

According to Board Chairman John Truempy, “The Board was absolutely correct. Our website was outdated and not serving our members as well as it could. A redesign was long overdue.”

With a clear mandate from the board, a Website Redesign committee meeting was held in August 2024. Members of the committee included:

- Bill Mandlebaum – President

- John Truempy – Chairman of the Board
- Mary May – Executive Director
- Jim Wiedman – Trustee
- Wendy Angel – Editor, *Keynotes*
- Vernon Kelley – Non-voting Director

While the driving force behind the redesign was the outdated look of the website, subject matter editing and creation was also desperately needed. More information was needed in many places — and less in others. A clear navigation path was also necessary to make sure users could find what they needed — fast. The bulk of the work for the website project fell to Wendy Angel and Vernon Kelley. By having a board member involved to work on a significant portion of the new content and hands-on work, ALOA was able to greatly reduce its budget exposure for this project.

### Under Construction

Work on the new website began in earnest in October 2024. For the next three months, Wendy and Vernon collected, edited, re-edited, wrote, co-wrote and re-wrote a tremendous amount of subject matter content covering every topic outlined in the new website navigation plan. This was all done with the help of staff, who weighed in on content and provided input to make the content as useful as possible to members.

Winter and Spring of 2025 witnessed the project coming to life as it progressed from subject matter creation to early designs and application of the navigation structure. A striking homepage was developed that served as the foundational design for all other website pages. From there, other page designs followed, and in March, the full set of designs and content were sent to the website developer, Westlake Media.

### It's Not Your Father's ALOA.org

As attractive and easy to navigate as the new website is, if it doesn’t include meaningful information for visitors, what’s the point of having a website at all?

To make the website a more useful resource for consumers — your potential customers — an all-new “For Consumers” section was created to provide more awareness about ALOA and scammer and security issues within the public. ALOA leaders have long heard you wanted us to do more to educate the public about scammer issues, and this is a first step in doing so. The page provides information on how to spot and report a scammer, and we hope that you will share this page on your own social media accounts as well.

This page also contains some very basic “how-to” information for residential and small business owners, with several linked callouts within the section that prompt the reader to “contact an ALOA member” for more information. This ties into another goal we had for the consumer section: driving potential customers of yours to one of our most popular member services, Find A Locksmith. As we promote this consumer section, the hope is that it results in more business for you, creating more value with your ALOA membership.

Naturally, we wanted to make the website considerably more useful to our own members, too, so attention was concentrated on enhancing the information on Education and Certification pages. Now, members have a one-stop resource to see our certification programs and membership types clearly outlined on a single webpage for each area.





[Search...](#)
[Member Login](#)
[Join ALOA](#)
[Donate to ASF](#)

[About ALOA](#)
[Membership](#)
[Education](#)
[Conventions](#)
[Divisions](#)
[Keynotes Magazine](#)
[For Consumers](#)
[ALOA Store](#)

# 2025 ALOA Convention & Security Expo

August 3-9, 2025  
 Hilton Orlando  
 Orlando, Florida



## Early Registration Deadline is July 1!

You have a choice when it comes to education. And when you choose the ALOA Convention & Security Expo, you're choosing the best place to make connections for your career.

ALOA 2025 not only has the industry's best instructors, but attendees from all over the world can also help connect you to future jobs, share technical information and build friendships with you that will last a lifetime.



Registration & Hotel Info



Schedule at a Glance



Events



Class Schedule




Exhibitor & Sponsor Info



Download the Registration Brochure

REGISTER NOW!


The new convention and division pages include enhanced information in a layout that makes information easy to find.



## ALOA Institutional Locksmiths

ALOA Institutional Locksmiths (AIL), a division of ALOA Security Professionals Association Inc. (ALOA SPAI), is dedicated to increasing and enhancing the technical skills of its institutional members through networking, education and certification.

[JOIN AIL](#)
[AIL BENEFITS](#)
[AIL CERTIFICATIONS](#)
[AIL BOARD](#)





AIL Board of Directors

**John Truempy, CFI, CMIL, CRL, ICML, IFDI, LSFDI**  
 Division President  
[truempy@gmail.com](mailto:truempy@gmail.com)

**Dale Bowman, CFP, PSP, CML, CJIL, CPSP**  
 Director

## Why Join AIL?

As an institutional locksmith, you have specialized needs. Due to the nature and location of your job, the scope of your day-to-day work can be completely different from that of the average commercial locksmith. On top of that, your job titles, supervisors and customers are different from the commercial and residential side as well. You need education, information and networking tailored to those issues.

And ALOA knows this. That's why we created a division just for you.

ALOA Institutional Locksmiths (AIL), a division of ALOA Security Professionals Association, Inc. (ALOA), is dedicated to increasing and enhancing the technical skills of its institutional members through networking, education and certification. By providing technical expertise and enhancing professionalism, we strive to provide a safe and secure environment for our employers, co-workers and patrons.

No matter your job title or which department you work in — maintenance, security, public safety, buildings and grounds, facilities management, etc. — AIL members provide a wide variety of locksmith and physical security-related services.

**ALOA MEMBERS CAN ADD ON AIL MEMBERSHIP FOR ONLY \$55! [Join now.](#)**

For the convention pages, content has been enhanced and designed in a simple, easy-to-navigate layout. Convention sponsors — who we appreciate so much — get a little more visibility too.

On the homepage, there is also a section where you can see the very latest from ALOA so you don't miss anything — from convention and class registrations to membership renewals and important news.

Every webpage has been edited, and, in most cases, additional information has been added to make ALOA.org a useful destination for members, prospective members and consumers alike. Search engine optimization (SEO) was considered when creating page titles and subject matter content. And each page now has efficient, modern navigation to enhance the visitor experience and encourage visitors to remain on the website even longer.

## The Future of ALOA Communications

As you can likely tell, a lot of thought and effort was put into every aspect of this new website. We wanted to start with the public-facing portion of the website because, well, that's the most visible and where most information is housed. What you'll notice is not included is [www.aloamembers.org](http://www.aloamembers.org), the members-only portion. That is the area where you actively sign up for membership, classes and conventions, and where you renew your membership, find members-only forms, voting links and other such items.

What you may not realize is that because of how the member database ties into the functions listed above, it's actually a separate website from ALOA.org. Budget did not allow us to include this portion in the website project, but updating its design and functionality is

“During the Board of Directors meeting that followed, many board members requested that action be taken to bring the website up to today's design standards.”

something ALOA would like to do in the future as budget allows.

For now, though, a lot of information housed on [www.aloamembers.org](http://www.aloamembers.org) — like member benefits, awards, member types and member applications, among other items — will now also be on ALOA.org, whether directly or linked within the pages. But, you will still have to log into [www.aloamembers.org](http://www.aloamembers.org) to renew dues, read the latest issue of *Keynotes*, register for classes and other such functions.

And, as mentioned above, we do hope to promote the For Consumers section via social media and other channels to not only combat the scammer issue but also provide you with more business leads as members. Once the site launches, we will have more information and instructions for you about that.

We are also producing a business card with a QR code to the For Consumers section. You will be able to add your information to it and print it at a service like VistaPrint at a low cost. The hope is that you can hand this out to your customers or potential customers to give them information about how not to get scammed. Once the site is launched, this will be available to members to download. We will need our members' help in getting the word out — thousands of voices are stronger than one.

ALOA Board members are excited that this website revamp is underway, and we can't wait to share the entire site with you. The anticipated launch date is in the

next month or two, and we will notify members once the site is live.

Thank you to everyone who provided input, time and energy into this project. Member organizations must always strive to advance while being cognizant of member resources. We are proud to say we accomplished that here.

But this website is not where it stops. In the coming months, the ALOA Board will be looking at new ways to improve member communications, attract new applicants and enhance value for members. This is your association, and the board and staff want to ensure it keeps working for you. 📧



**Vernon Kelley, CFDI, CFFDI, CFL, CMIL, CPL, ICML, IFDI, LSFDI**, has been involved in the locksmith industry since 1989. He is the proprietor of Vernon Kelley Security Consulting, LLC. A noted instructor, writer, and an expert in fire and life safety codes in the means of egress, he's co-author of the book *Institutional Lock Shop Management* and is editor-in-chief of the *IAIL Forensic Locksmith Manual*. Vernon is currently the first trustee of ALOA Institutional Locksmiths, secretary for the ALOA Scholarship Foundation, and an ALOA SPAI non-voting director. He's a recipient of the Lee Rognon, AIL Influential Leader, Robert Gress, Gerald J. Connelly, Jr. Pioneer, Ray D'Adamo ACE Instructor of the Year, and *Keynotes* Author of the Year awards.



**Wendy Angel** is the editor of *Keynotes*. She received her bachelor's degree in journalism and mass communication from the University of North Carolina at Chapel Hill and her master's of science in marketing from Georgia State University.



# Opening a Wells Fargo Chest

Blaine Lucas, CJS, CML, CPS, ARL, opens an antique strongbox.



FIGURE 1. Here is the top view showing the key slot and "D" boltwork handle.

**I** HAD JUST GOTTEN BACK FROM a service call and was shown a locked container (see *Figure 1*). It was a sturdy-looking strongbox. I can imagine this box traveling the countryside atop a stagecoach. It looked like it would be strong enough to keep the bandits out of it. There was a triangle-shaped handle on the short sides of the strongbox (*Figure 2*). It appeared to be of decent quality and designed so that two people can carry it.

We were able to give an open-only price. It can be a little chancy to give an open-and-repair price on these old strongboxes. Since the customer had never opened the box, it was possible that it could have a broken lock — a hard-to-replace broken lock. The customer said he got this from his brother and never saw it opened.

We set up a time for the customer to bring it back. He said he could just leave it and pick it up when complete. Our company policy does not allow a safe to be dropped off for opening, even if the customer thinks it is empty. We set up a time for him to return in a few days. As I was not familiar with this strongbox, I needed time to do some research.

## Researching Online

I posted some pictures on ClearStar and the NSO websites. I called the strongbox a Wells Fargo stage coach strongbox, as that is what it reminded me of, but I was not sure of the brand. I got the first response from Dave McOmie. He posted



some pictures taken by Skip Eckert on the NSO website of a nearly identical box that was photographed in 2009. I think these were actual printed photos. His strongbox was labeled as “Wells Fargo and Co Express.” One problem with using a film camera is that you never really know how well your pictures turned out until the subject is long gone. Of course, any picture is better than none. The box was right on, but the keyhole was different. This was much more information than I had before. Thanks and RIP to Skip.

### Opening Day

The customer arrived right on schedule first thing in the morning. We took the strongbox out of his car and loaded it onto our lift cart. This made it easy to bring into the shop (Figure 3). The safe measured 15" H x 22½" W and 15" D. Two people easily moved it from the car to the cart.

In Figure 4, you can see two holes near the keyway. The cuts on the key face the “D” handle. At first, I thought

maybe someone had drilled this box before. On closer examination, these holes were threaded. When I rechecked Skip’s pictures, his lock had a keyhole cover plate. Perhaps this box had one at some time in the past. On these old safes, it is a good idea to look for signs of it having been drilled before. If a drilled repair is visible, this may help you plan

your attack. This safe showed no obvious signs of being previously drilled. I used my ophthalmoscope to view inside the keyway. This is an instrument for inspecting the retina and other parts of the eye. It shines a light into small places and has an adjustable focus. I could see four levers and a foot on the end of the keyway post.



FIGURE 2. The strongbox has a lifting handle on each side.



FIGURE 3. The box is shown from the side on the lift cart.



FIGURE 4. Here's a close-up view of the keyway.





FIGURE 5. These are the author's homemade picking tools.



FIGURE 6. Take a look at the picks in action.



FIGURE 7. The author drilled for the fence at  $\frac{1}{2}$ " right.



FIGURE 8. The author drilled for the fence at  $\frac{5}{8}$ " up.

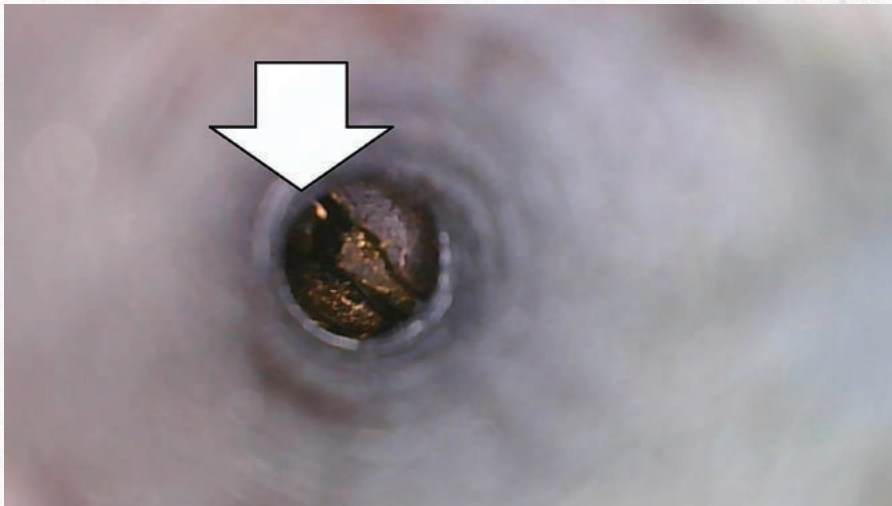


FIGURE 9. This is the view looking down the drilled hole. The arrow points to the fence.

I gathered my assortment of wires and started to make my picking tools (*Figure 5*). I used my flat wire as a turning tool and my bent round wire to manipulate the levers (*Figure 6*). The top lever had a very firm feel compared to the other three levers. I tried to pick this lock for a while, but the different feel to the levers made me think that the bottom three levers were not working properly. What little lever lock picking I do, the levers usually all feel the same to me spring-wise. This made me think I had a bad lock. Since the customer never had a key, this made me think picking would not work. I probably should have had more patience and tried picking longer.

### Time to Drill

Many lever locks have a viewing window predrilled in the lock case to view the bolt fence and the lever gates. It is usually around the one or two o'clock area. Depending on the lock case size, the location is not a standard measurement from keyway center. I used the "Force" (took a guess) and drilled a small hole. I was thinking that by drilling the smallest hole I could use my 2.7 mm scope in, if I was not in the desired location, I could at least see where I needed to go. I would either enlarge the drilled hole or move to a new location.

*Figures 7 and 8* show the location of the drilled hole at  $\frac{1}{2}$ " right and  $\frac{5}{8}$ " "up." I was very careful not to over drill and damage the lock. At first, I did not recognize what I saw through the scope. I used the turning tool I made to move the key post and looked for movement inside the drilled hole. I could see the tip of the bolt fence bouncing off the top of the levers. I must have made some kind of joyous sound, as the customer asked if I got it opened. I said, "not yet," but I was in the right area.

In *Figure 9*, taken with the Teslong





FIGURE 10. The lock bolt is retracted.



FIGURE 11. The wire is being fished through the lever gates.



FIGURE 12. You can see the serial number on the boltwork.



FIGURE 13. The same number is stamped on the boltwork handle.



FIGURE 14



FIGURE 15

FIGURES 14 AND 15. The boltwork is in the unlocked position in Figure 14 and locked in Figure 15.

scope, you can see the arrow pointing to the bolt fence. The Teslong scope diameter was too large to fit into the drilled hole, so I held it on top of the hole for the picture. The first lever is already in alignment, and you can see the second lever through the gate in the top lever. The camera is tilted, but the fence should be at the 12 o'clock position on this lock.

Figure 10 shows the wire ready to be inserted. I tried to use a wire as wide as

the lever gates. As I picked each lever, starting from the lever closest to me, the wire would drop a little more until the wire was through all four levers. As the top lever was a deep cut and I could see the second lever through the gate, I only had to move three levers to align the bolt fence. Then all I needed to do was to turn the post to retract the lock bolt. Figure 11 shows the wire inserted through the lever gates and the key post turned to

the unlocked position. It was unlocked.

On the back side of the door, someone had painted an ID number on the boltwork. This did not look factory to me (Figure 12). Then I noticed the same number engraved on the handle, so maybe this was original (Figure 13). Figure 14 shows the full view of the door with boltwork in locked position and key lock unlocked. Figure 15 shows boltwork retracted.



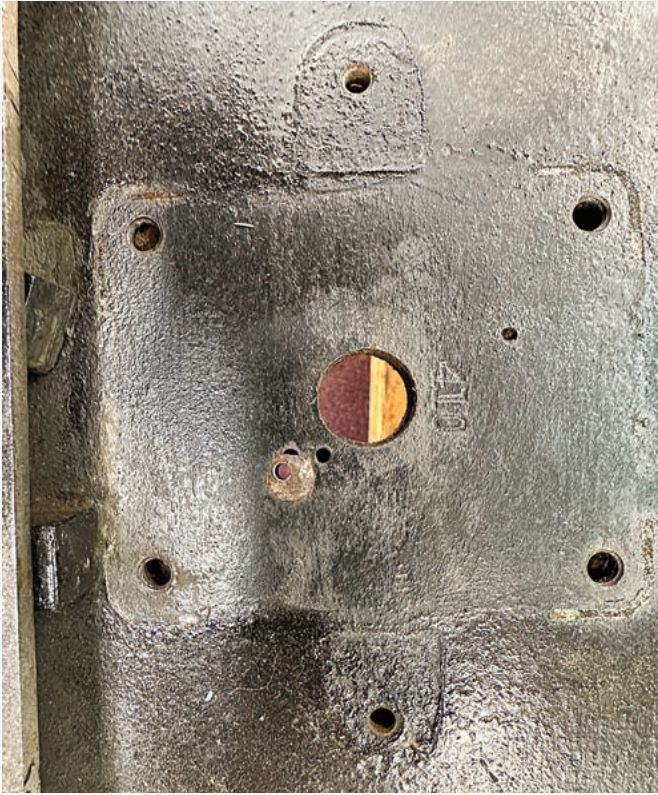


FIGURE 16. The lock is removed. This had been drilled before.



FIGURE 17. The door is double-plated.



FIGURE 18. The lock is removed, and the bolt extended.



FIGURE 19. Here is a close-up view of the lever and gate window.





FIGURE 20. The lock bolt is partially retracted.



FIGURE 21. The bolt is fully retracted.

## Making a Key

It was then time to make a key. I removed the lock, and what do you know — I see someone had drilled this door before (*Figure 16*). I had to take another look at the face of the door. Even knowing where to look, I could not see any hole repairs. I found another serial number under the lock: 410. The door was made of a double plate. *Figure 17* shows it starting to spread.

The lock was a large size, measuring  $4\frac{5}{8}$ " H x  $3\frac{3}{8}$ " W and 1" D (*Figure 18*). *Figure 19* gives a close-up view of the lever/fence viewing window. I do not think you could easily pull the nose on this lock. Like some safe deposit locks, it is very well made. Even if you could, the levers have a tip that does not allow the levers to drop away from the fence,



I probably should have had more patience and tried picking longer.



and this would surely damage the hard-to-replace lock.

*Figure 20* shows a close-up view of the lock in the partially unlocked position, and *Figure 21* gives a full view in the unlocked position. I noticed that there was a small crack in the lock cover. I am glad it was not broken, as it would be hard for me to repair. I removed the lock cover and flipped it over. It was not just a crack in the lock cover; it was broken before, and someone had already repaired it (*Figure 22*).



FIGURE 22. The lock cover has been repaired.



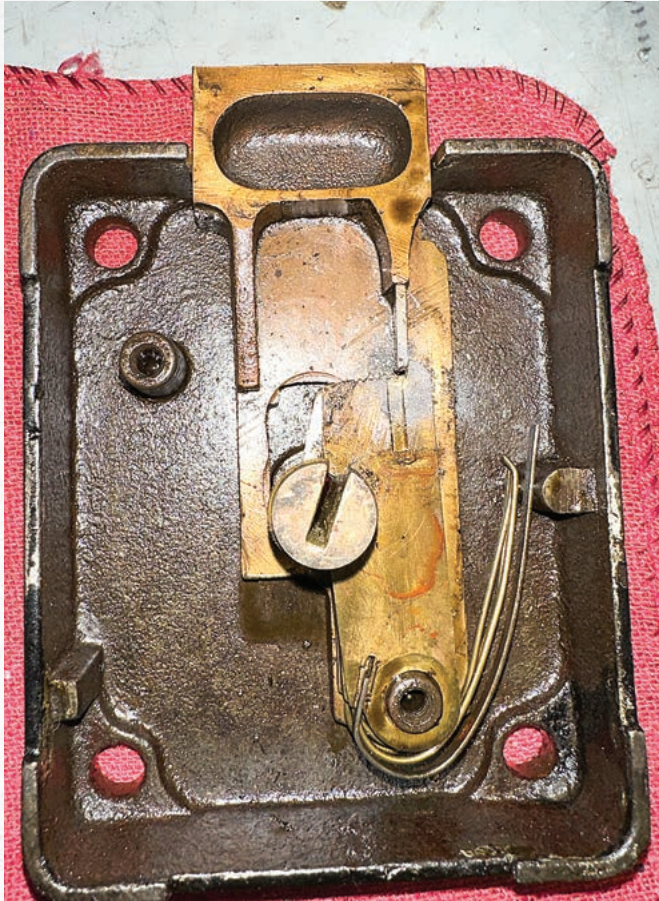


FIGURE 23. The lock is shown with the cover removed.

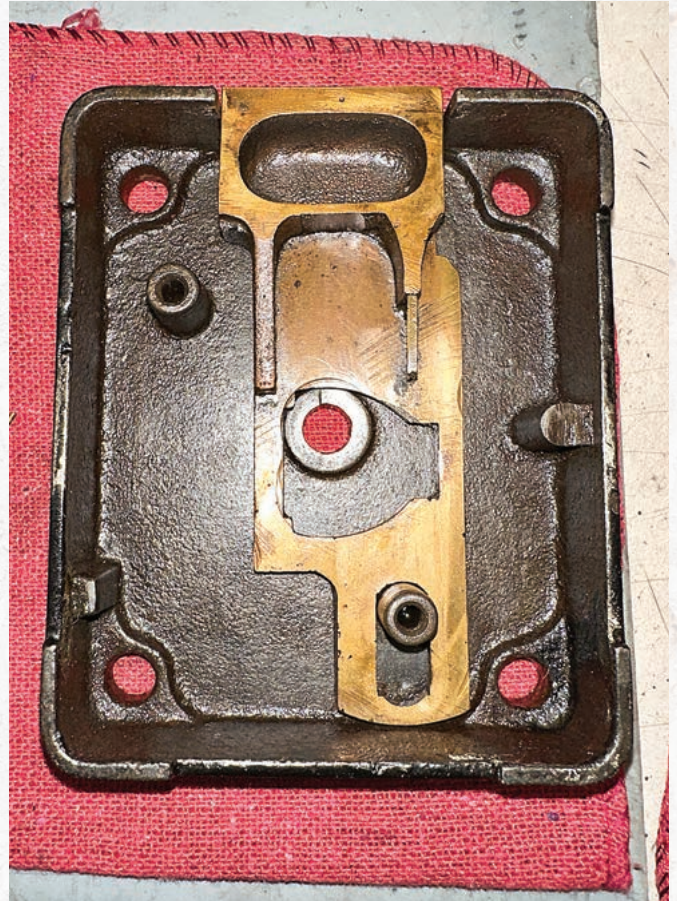


FIGURE 24. The levers are removed.



FIGURE 25. Here is an exploded view of the lock.

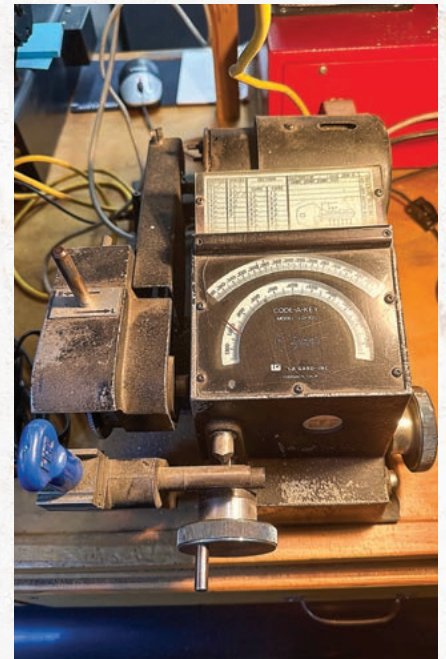


FIGURE 26. This is the code cutter the author used.





Looking back on the job, I should have been more alert to the fact that this safe was drilled before.



In *Figure 23*, I have removed the lock cover, exposing the inner workings. *Figure 24* shows the lock with the levers and key post removed. *Figure 25* is the exploded view. Looking at the No.1 lever (closest to the key post), you can see a longer and thicker non-original-looking spring wire. This is why it felt different on this lever when picking the lock. There was nothing wrong with the lock. It just made all the other levers feel different when picking.

At one time, our most-used code machine was the LA GARD “Code-A-Key” (*Figure 26*). The machine design was purchased by HPC and became its 1200 code cutter. Now it gets used mainly for flat steel keys.

The levers measured .073 thick, so I used a .081 thick cutter. This gave me a few thousands on each side of the levers for a smooth action. Using the universal code card, I set the spacing at 1.000 on the code machine and tip stopped the key to be cut (*Figure 27*). The spacing from the tip of the key was .759, .686, .613 and .540. This was center of each cut. Looking through the fence hole in the lock cover, it was easy to make a key. *Figure 28* shows the finished keys. This lock had the common throat ward cut and another ward cut deeper in the lock just above the levers. I used the ILCO 1226 key blank.

We repaired the drilled hole in the door with SteelStik (*Figure 29*). We applied some black paint with a paper towel to hide our opening hole. I forgot to take this picture. Looking back on the job, I should have been more alert to the fact that this safe was drilled before.



FIGURE 27. The key is tip-stopped, with spacing at 1,000.



FIGURE 28. The author made two new keys.



FIGURE 29. The drilled hole is plugged.

The previous driller did a good job hiding the drilled hole. I noticed that the safe body was painted flat black, and parts of the door were gloss black, but I didn't give it much thought. This lock should have been able to be picked, but since I was getting an inconsistent feel from the levers, I decided to drill. I told the fellow technicians in the shop that the safe was ready to go and to call the customer so he could bring his stage-coach by to pick up his strongbox. 🚚



**Blaine Lucas, CJS, CML, CPS, ARL**, is a third-generation locksmith and president of Foothill Locksmiths, Inc., which offers security solutions to residential, commercial and automotive customers throughout the East Bay in Hayward, California. Blaine's grandfather founded the company in 1956. Blaine was 12 years old when he started working with his grandfather on Saturdays.





**Bryan Kruysman, CML, IFDI,**  
uses cribbing to move two safes.

**C****RIBBING IS A GREAT TOOL. IT'S ALSO DANGEROUS** if not used properly, so use it wisely. Most times, our crew uses it for small elevation changes up to around 36"; we would use our elevation table for anything higher. I'm sure you could safely crib higher, but I don't. The rule of thumb that I found on the internet (so it must be true) is that the height should not be more than three times the width. But I would take into consideration the height of the safe in that rule. It just means you need to expand your base if you go higher.





FIGURE 1. The platform is made. The pallet jack and safe will do the lifting to level with the opening.

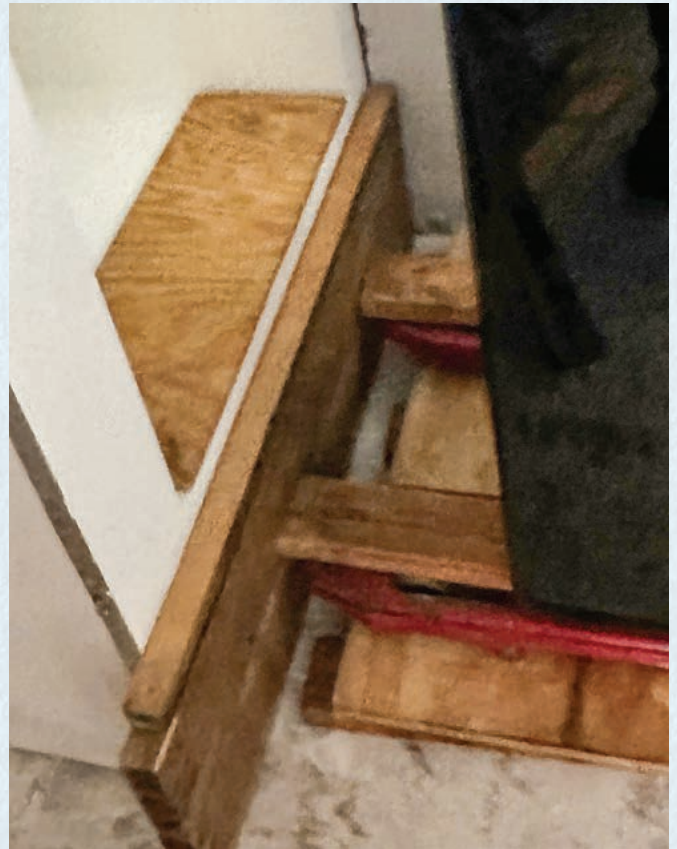


FIGURE 2. Here is a view of the protection for the walls and floor.

### The All-Important Pallet Jack

The pallet jack is an important part of cribbing for us — that’s our lifting power. Many riggers just use leverage for cribbing, and that’s fine. I’ve done it; depends on the situation. Also, there are a few different types of cribbing. Most times, we use box cribbing, aka falsework. It’s defined as a temporary structure to support a heavy load, or safe in our case.

We have two pallet jacks that we use with our jobs: one is full-size, and the other is smaller and has a smaller wheel base. The smaller pallet jack is shorter and has a smaller width and smaller turning radius. That can be a real advantage when moving in tight spaces. But the full-size one has a larger footprint, and that equates to more stability. Choose your advantage.

### Two “Baby Cribbing” Jobs

This article has pictures for two “baby cribbing” jobs. I call them baby cribbing because the height is small. Also, the homonym is funny (at least to me). In the first job, the safe job is going up, and in the second job, the safe is going down. The second safe was heavier than the first. The second safe also had an obstacle that prevented using a ramp. So, we just cribbed down.

The first job was a Brown safe that had to be handled with white gloves, so we just cribbed up, but we could probably have manhandled it up, as it wasn’t that heavy. On the first job, we only



FIGURE 3. The team is placing extra wood for that last bit of lift.





FIGURE 4. This is the front view of the operation.

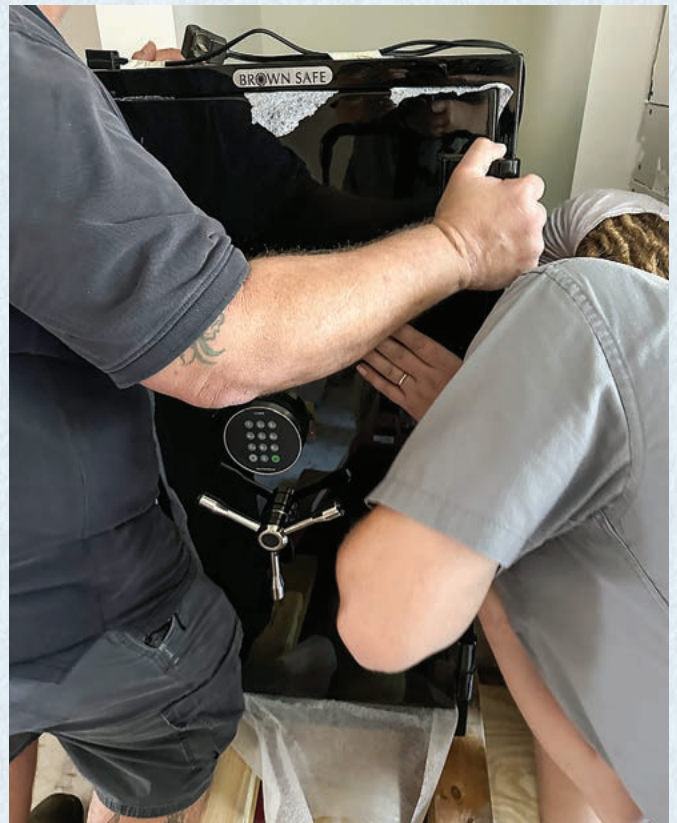


FIGURE 5. This safe is not too heavy at about 700 lbs., so big John and Dallas shove it into place.



FIGURE 6. The safe is in place with no damage to the walls or cavity where the team installed it.

needed to go up about 10", so there wasn't a bunch of cribbing done. First, we built the first layer, then we put a pallet jack on the first layer. We were still short by a few inches, so we used one more layer. This is not your typical box cribbing, but technically it meets the definition of cribbing (a temporary structure).

### The Second Job

The second job was pretty cool with how we handled the drop. The safe itself weighed in at about 3,500 lbs. The first task was getting it unbolted. The original installer had used an expansion bolt, and that's a good bolt-down — until you have to move the safe. At 3,500 lbs., a safe does not respond to "jump" or any other commands, so first we had to get the safe high enough to cut the anchor. The floor of the safe was 5" thick, and we needed to get a Sawzall under the safe to cut the anchor. Many incremental elevation changes had to be done to get the safe elevated high enough. You can see from the pictures we had to use two Johnson bars just to get it started.

The safe had melded into the floor, and that initial  $\frac{1}{4}$ " can be a pain. I also drive steel wedges underneath to break the meld. Many times, when we can, we get a piece of material in the center of the safe, and then we rock it back and forth to slowly increase the height. During this time, we also crib the corners and use the Johnson bar to elevate.





FIGURE 7. Here is the inside view of the beautiful product that Brown makes.



FIGURE 8. This is the bolt down — the expandable bolt anchor.



FIGURE 9. On the second job, two Johnson bars were needed just to break the safe free.



FIGURE 10. The safe is free and is starting the trip down.





FIGURE 11. The safe is high enough to get Sawzall underneath, with a long blade to cut the bolt.



FIGURE 12. The beast is up on 4x4s, and the team was able to pull it out with the pallet jack.



FIGURE 13. Here, the front wheel is stuck in a seam of plywood that is protecting the flooring.



FIGURE 14. It was perhaps a bit of a tight fit.





FIGURE 15. This is the front door. You can see the pallet that was used to fill in the front entryway. Two pallet jacks were used to make this tight right turn.

Finally, we were able to cut the anchor. The safe was already set up to use the pallet jack, so we used that to get it to the front door of the home. I hate moving safes on a pallet jack because it is not as stable as Rol-A-Lifts. But, this job was not happening any other way — there simply was not enough room for Rol-A-Lifts.

You can see from the pictures that the front door had its own problems: a drop down and a wall right outside. Normally, we would just ramp it down, but, again, there was no room. The safe would need to make a hard right turn. We were able to use a pallet and some plywood to crib up to the sill of the door. The use of two pallet jacks can be seen in the photos. A hard right turn was accomplished. The safe was moved to a storage place until the owner decides to use it again.

The second move was an advanced job that I would not recommend for someone just starting out moving safes, but if you scaled the weight of the safe back, it would be doable for your average safe mover. Move safely, keep your digits clear and prosper. 🍀



**Bryan Kruysman, CML, IFDI**, started working on safes and locks in 1974 for his father. He purchased Suncoast Safe and Lock in Sarasota, FL, in 1991, and moved to his present location in Venice, FL, in 2006.



FIGURE 16. In retrospect, the author wishes they would have used one of their heavy-duty pallets rather than this one.



FIGURE 17. It's an easy move from here to new home. Dallas is moving it alone.



# By Any Means Necessary ...

Tony Wiersielis, CPL, CFDI, discusses doors damaged by firefighters breaking into an apartment that was on fire.



FIGURE 1. A fire broke out in this apartment, and the author subsequently had to work on several doors the firefighters had to break into to check for fire.

## IN MY ARTICLE IN THE JANUARY/

February issue of *Keynotes*, I made a comment about locked gates on the roof of one of the college buildings. As you probably know, firefighters get through those gates by any means necessary. Shortly after I submitted the article, I had firsthand experience with forced entry when a tenant in my brother's building had a fire in his apartment.

A little background: The building is a 70-year-old brick building with 36 units and a larger superintendent's apartment. There are two sides to the building, with 18 apartments per side — mostly one bedrooms and studios, and each side has its own entrance. The basement connects both sides. I grew up in this building and was the super in my late 20s.

The fire broke out in apartment 104 (see *Figure 1*). You can see the streaks from the water on either side of the door. The tenants were hoarders and were using an under-rated extension cord under some debris, which caught fire. It turned out that several other tenants



The building is 70 years old. It has Kalamein doors, which have a solid wood core with metal sheathing.







FIGURE 2. The apartment above the fire location also had hoarders.



FIGURE 3. This is the debris the firefighters threw out of the window.



FIGURE 4



FIGURE 5



FIGURE 6

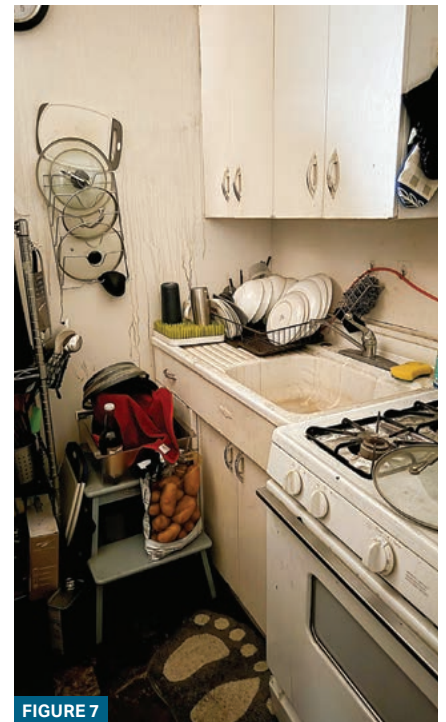


FIGURE 7

FIGURES 4-7. You can see some of the damage and clutter throughout the apartment.

were hoarding as well. *Figure 2* shows the apartment above the fire, also occupied by hoarders. This is a one-bedroom apartment, but there's barely room to walk from the door to the bedroom.

*Figure 3* is a shot of the debris the firefighters threw out of the bedroom window, and *Figure 4* shows some of the damage and clutter plus the window sashes that were removed in the

process. *Figure 5* shows the black soot on the walls from the fire. *Figures 6* and *7* show parts of the kitchen. You can't help but wonder how people could live like this.





FIGURE 8. This is the most-damaged door (305). You can see how the wood is exposed.



FIGURE 9. The deadbolt of the Chesler mortise lock is circled in red.



FIGURE 10. Here are the remains of an Arrow deadbolt that was ripped out of the door.



FIGURE 11. You can see the start of what firemen call a "gain of purchase."

## The Murder of the Doors

Obviously, the firemen had to get into apartment 104 to fight the fire. Besides that, they also had to get into other apartments above or adjacent to 104 to make sure the fire had not spread. I don't believe many tenants were home, but if they were, they ran out of the building. The firemen then forcibly entered a lot of the doors. The following pictures will show you what they did.

The building is 70 years old. It has Kalamein doors, which have a solid wood core with metal sheathing. The sheathing appears to be soft tin or lead; I'm not sure which. *Figure 8* shows the most-damaged door (305), with the skin peeled and the wood exposed. *Figure 9* shows the Chesler mortise lock, with the deadbolt circled in red. The bolt was damaged to the point that it wouldn't move anymore. *Figure 10* shows the remains of an Arrow deadbolt that was ripped out of the door.

*Figure 11* shows the start of what firemen call a "gain of purchase." It was explained to me by my friend — the fire marshal at the college — who is a retired firefighter: "In order to force a door, the firefighter needs to break the lock close to the lock, but not on top of it. There is more 'give' to the door further away. You start further away and work towards the lock. Gain of purchase is the process of getting closer to the lock."

*Figure 12* shows door 305 again and how I kind of bent the metal around close to where it used to be by the bolt hole. There will likely be some Bondo work and sanding, but I'm not doing that part of it. *Figure 13* shows how bent out of shape the escutcheon plate was by the entry tools. I was able to "fix" some of the plates with two pairs of Channel lock pliers.





FIGURE 12. The author bent the metal around close to where it used to be by the bolt hole.

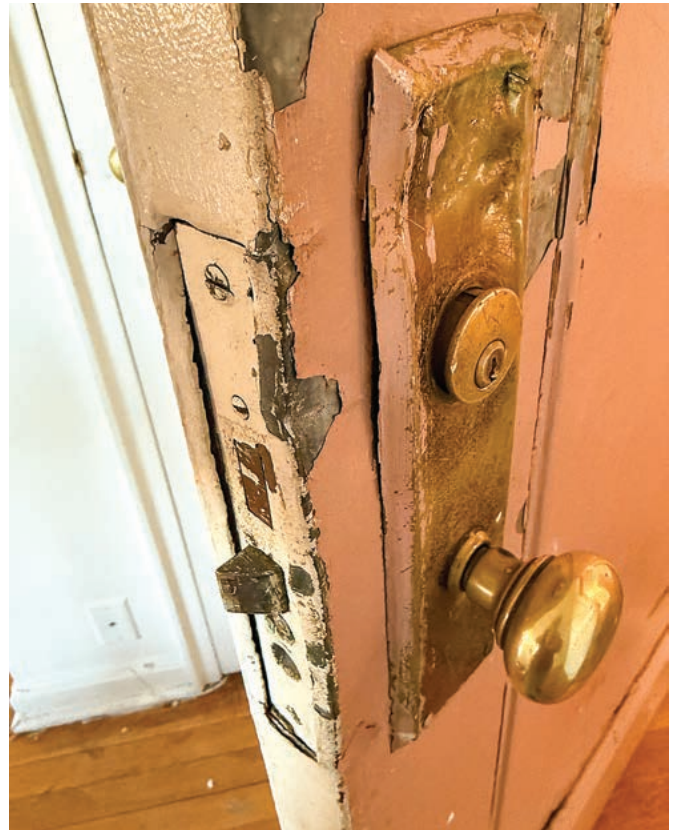


FIGURE 13. The escutcheon plate was incredibly bent out of shape by the entry tools.



FIGURE 14. The black arrow points to the gain of purchase above the lock, and the red arrow points to the pry marks on the lock.



FIGURE 15. The two red arrows point to two rectangular holes on the door frame.

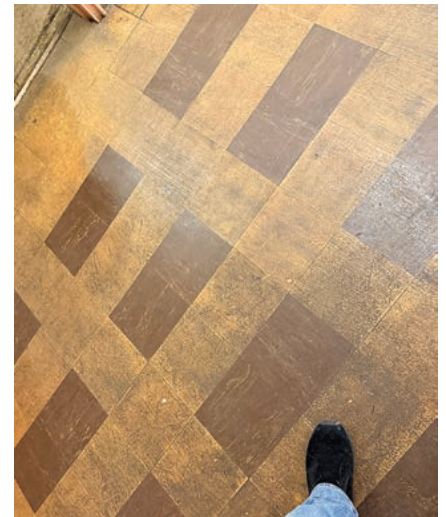


FIGURE 16. Here, you can see the discoloration from the smoke.

## More Damage

Figure 14 shows another door on which violence was inflicted. The black arrow points to the “gain of purchase” above the lock, and the red arrow points to the pry marks on the lock. In Figure 15 we see some stranger things. The two red

arrows point to two rectangular holes on the door frame. I think these might have been made by the crowbar end of a Halligan tool when the firemen were breaking in. Figure 16 shows the floor and the discoloration from the smoke.

I’m still working on some of the doors.

My first issue was the broken bolts on the deadbolts. Since most of the mortise locks weren’t working, I had to replace the bolts so the tenants could lock their doors. I found that the actual locks weren’t damaged — just the bolts, which made things easier.





FIGURE 17. This is one of the custom strike plates.



FIGURE 18. The new mortise lock's deadbolts are significantly larger than the old ones.

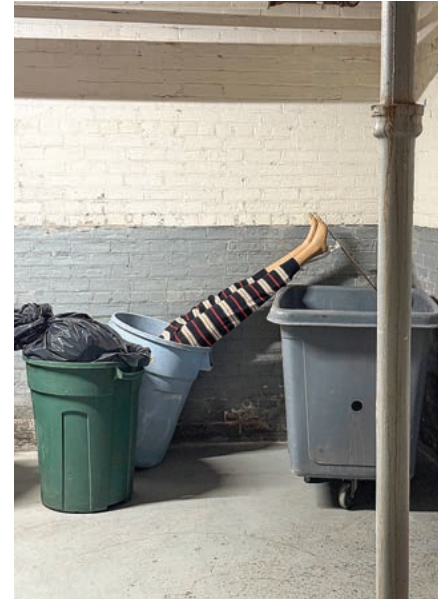


FIGURE 19. This mannequin in the trash at the fire site gave the author a startle (can't blame him for that).



FIGURE 20. The author saw hundreds of padlocks on a fence in Asbury Park, NJ (probably "love locks").



FIGURE 21



FIGURE 22

FIGURES 21 AND 22. The author uses a belt hook on this tape measure holder to securely hang his tools on.

The more difficult part was, and is, replacing the old Chesler mortise locks. I've been installing Marks mortise locks that fit the old prep, but it's a pain to spot the new holes for them, making it time-consuming. The nice part is that the escutcheons cover everything, with

the possible exception of the "purchase" marks and the sheet metal damage.

The deadbolts in this building are a mixture of Segal and Yale jimmy-proofs, Kwikset and mostly Arrow deadbolts. It was a stroke of luck that none of the non-Arrow deadbolts were damaged. I

did find two Yale jimmy-proofs on vacant apartments with missing inside thumb-turns, so I'm replacing them as well.

### Another Challenge

The other challenge I have to deal with is the mortise strikes. Most of them were





**I'm still working on some of the doors. My first issue was the broken bolts on the deadbolts.**



mangled and broken. My distributor didn't have them, and I didn't expect them to, as old as they were. Years ago, I used to go to a metal working shop and have astragal and various plates made to order when I needed them. I called them up and Karl, the guy I used to deal with, remembered me. *Figure 17* shows one of the strike plates he made for me. The only thing I had to do was countersink the mounting holes. They fit perfectly.

The last thing I have to deal with is the fact that the new mortise lock's deadbolts are significantly larger, as you see in *Figure 18*. I've found that some of the preps are too shallow, which means I'll need to use masonry bits to deepen them.

### Bits and Pieces

While I was working on the damaged locks in the apartment building, I would walk from one side to the other through the basement. One side room of the basement had the garbage cans in it. *Figure 19* was a mannequin somebody threw out. No big deal except for when I turned the corner and saw it for the first time! For a split second, I thought somebody threw a body in the can. That was a bit startling, to say the least.

I recently went to Asbury Park, NJ, to the Silverball pinball museum with my brother-in-law and his teenage son. It's right off the beach, so we took a walk and came to a chain link fence with hundreds of padlocks hanging on it (*Figure 20*). I don't know why they were there, but it was interesting. (*Editor's Note: They're probably "love locks."*)

*Figures 21 and 22* show a tape measure holder that is normally attached to a tool bag or belt. I got one and screwed it to one of the shelf units in my truck. I used to hang a belt clip tool pouch on it, but it kept falling off. Then it occurred to me that I could hang tools with a belt hook on the holder like the one you see my drill hanging on. It never falls off. 🛠️



**Tony Wiersielis, CPL, CFDI**, has almost 40 years of experience and has worked in most phases of the trade throughout the New York metropolitan area. He was named *Keynotes* Author of the Year for 2016 and 2022 and serves as ALOA's Northeast Director. Reach him at [aew59@juno.com](mailto:aew59@juno.com).

# HOLLON

SAFE COMPANY

## YOU ASKED FOR MORE COLORS, WE HEARD YOU!



## INTRODUCING THE NEW TEAL DOMINION GUN SAFE!

DOM-22

ALSO AVAILABLE IN 11 & 16 GUN CAPACITIES

**HOLLONSAFE.COM**  
**(888) 455-2337**



## DISTRIBUTORS

### Access Hardware Supply

Phone: 800-348-2263  
Fax: 510-435-8233  
www.accesshardware.com

### Accredited Lock Supply Co.

Phone: 800-652-2835  
Fax: 201-865-2435  
www.acclock.com

### American Key Supply

Phone: 800-692-1898  
Fax: 650-351-5973  
www.americankeysupply.com

### Banner Solutions

Phone: 888-362-0750  
www.bannersolutions.com

### Capitol Industries

Phone: 514-273-0451  
Fax: 514-273-2928  
www.capitolindustries.com

### Car And Truck Remotes.Com

Phone: 678-528-1700  
Fax: 844-457-8948  
www.carandtruckremotes.com

### CLK Supplies

Phone: 800-848-6989  
www.clksupplies.com

### Direct Security Supply, Inc.

Phone: 800-252-5757  
Fax: 800-452-8600  
www.directsecuritysupply.com

### Dugmore & Duncan

Phone: 888-384-6673  
www.dugmore.com

### Fried Brothers Inc.

Phone: 800-523-2924  
Fax: 215-627-2676  
www.fbisecurity.com

### Hans Johnsen Company

Phone: 214-879-1550  
Fax: 214-879-1520  
www.hjc.com

### Hayman Safe Company

Phone: 407-365-5434  
www.haymansafe.com

### H L Flake Co.

Phone: 800-231-4105  
Fax: 713-926-3399  
www.hlflake.com

### IDN Incorporated

Phone: 817-421-5470  
Fax: 817-421-5468  
www.idn-inc.com

### Intermountain Lock & Security Supply

Phone: 800-453-5386  
Fax: 801-485-7205  
www.imlss.com

### Jovan Distributors Inc.

Phone: 416-288-6306  
Fax: 416-752-8371  
www.jovanlock.com

### Key4, Inc.

Phone: 213-788-5394  
Fax: 213-788-5444  
www.key4.com

### Keyless Entry Remote, Inc.

Phone: 402-671-5100  
Fax: 402-671-5100  
www.keylessentryremotefob.com

### Keyless Ride

Phone: 877-619-3136  
Fax: 409-216-5058  
www.keylessride.com

### Lockmasters, Inc.

Phone: 859-885-6041  
Fax: 859-885-1731  
www.lockmasters.com

### Locksmith Ledger International

Phone: 847-454-2700  
Fax: 847-454-2759  
www.locksmithledger.com

### Locksmith Resource

Phone: 312-789-5333  
Fax: 925-666-3671  
www.locksmithresource.com

### Master Teknik Tasarim

**Mak San Ve Tic LTD Sti**  
Phone: +90 (212) 223-0503  
www.masterpick.net

### Midwest Keyless

Phone: 815-675-0404  
Fax: 815-675-6484  
www.midwestkeylessremote.com

### RAE Security, Inc.

Phone: 832-849-4150  
www.raesecurity.com

### Royal Key Supply

Phone: 817-779-4758  
www.royalkeysupply.com

### SECLOCK

Phone: 800-847-5625  
Fax: 800-878-6400  
www.SECLOCK.com

### Southern Lock and Supply Co.

Phone: 727-541-5536  
Fax: 727-544-8278  
www.southernlock.com

### Stone & Berg Wholesale

Phone: 800-225-7405  
Fax: 800-535-5625  
www.stoneandberg.com

### TimeMaster Inc.

Phone: 859-259-1878  
Fax: 859-255-0298  
www.time-master.com

### Transponder Island

Phone: 440-835-1411  
Fax: 216-252-5352  
www.transponderisland.com

### Turn 10 Wholesale

Phone: 800-848-9790  
Fax: 800-391-4553  
www.turnten.com

### Wesco | Anixter

Phone: 844-522-5275  
www.anixter.com/locksmith

### UHS Hardware

Phone: 954-866-2300  
www.uhs-hardware.com

### U.S. Lock Corp.

Phone: 800-925-5000  
Fax: 800-338-5625  
www.uslock.com

## MANUFACTURERS

### Abrites USA LLC

Phone: 623-516-9933  
Fax: 623-516-9934  
www.abus.com

### ABUS KG

Phone: 492-335-634151  
Fax: 233-563-4130  
www.abus.com

### ABUS USA

Phone: 623-516-9933  
Fax: 623-516-9934  
www.abus.com

### ACS s.r.l.

Phone: 052-291-2013  
Fax: 052-291-2014  
www.acs.re.it

### Allegion

Phone: 317-810-3230  
Fax: 317-810-3989  
www.allegion.com

### Altronix

Phone: 718-567-8181  
Fax: 718-567-9056  
www.altronix.com

### American Security Products

Phone: 800-421-6142  
Fax: 909-685-9685  
www.amsecusa.com

### ASSA, Inc.

Phone: 800-235-7482  
www.assalock.com

### Advanced Diagnostics USA

Phone: 650-876-2020  
www.adusa.us

### Autel US Inc.

Phone: 855-288-3587  
www.autel.com

### Bordtek

Phone: 904-329-1324  
www.bordtek.com

### Brilliant Guard

Phone: 630-229-4601  
www.brilliantguard.com

### Bullseye S.D. Locks LLC

Phone: 859-224-4898  
Fax: 859-224-1199  
www.bullseyesdlocks.com

### Chameleon Lock

Phone: 847-477-7587  
Fax: 847-307-8491  
www.chameleonlock.com

### CK YaoKey Electronic Products Co. LTD

Phone: 861-477-880-7360  
www.ck-yaokey.com

### Command Access Technologies

Phone: 888-622-2377  
Fax: 888-622-2377  
www.commandaccess.com

### CompX Security Products

Phone: 864-297-6655  
Fax: 864-297-9987  
www.compX.com

### DETEX Corporation

Phone: 800-729-3839  
Fax: 800-653-3839  
www.detex.com

### Digipas Technologies, Inc.

Phone: 949-558-0160  
Fax: 949-271-5701  
www.egeetouch.com

### Don-Jo Manufacturing, Inc.

Phone: 978-422-3377  
Fax: 978-422-3467  
www.don-jo.com

### Door Closer Service Co.

Phone: 301-277-5030  
Fax: 301-277-5080  
www.doorcloser.com

### Door Controls International

Phone: 800-742-3634  
Fax: 800-742-0410  
www.doorcontrols.com

### dormakaba Best

Phone: 317-810-1000  
www.dormakaba.com

### FireKing Security Group

Phone: 800-342-3033  
Fax: 708-371-3326  
www.fireking.com

### FJM Security Products

Phone: 800-654-1786  
Fax: 206-350-1186  
www.fjmsecurity.com

### Framon Manufacturing Company Inc.

Phone: 989-354-5623  
Fax: 989-354-4238  
www.framon.com

### Gardall Safe Corporation

Phone: 312-432-9115  
Fax: 315-434-9422  
www.gardall.com



**General Lock**

Phone: 858-974-5220  
 Fax: 858-974-5297  
[www.generallock.com](http://www.generallock.com)

**GKL Products Inc.**

Phone: 916-686-0868  
 Fax: 916-686-0868  
[www.GKLProducts.com](http://www.GKLProducts.com)

**Global Tecspiro, Ltd.**

Phone: +86-152-2033-2799  
[www.gtl.tw](http://www.gtl.tw)

**Hollon Safe**

Phone: 888-455-2337  
 Fax: 866-408-7303  
[www.hollonsafe.com](http://www.hollonsafe.com)

**HPC/Hudson Lock**

Phone: 800-323-3295  
 Fax: 978-562-9859  
[www.hudsonlock.com](http://www.hudsonlock.com)

**KEYLESS LLC.**

Phone: 502-442-2380  
[www.ikeyless.com](http://www.ikeyless.com)

**International Key Supply**

Phone: 631-433-3932  
[internationalkeysupply.com](http://internationalkeysupply.com)

**J.C. Gury Signs and Decals**

Phone: 714-738-6650  
 Fax: 714-738-6998  
[www.jcgury.com](http://www.jcgury.com)

**JMA USA**

Phone: 817-385-0515  
 Fax: 817-701-2365  
[www.jmausa.com](http://www.jmausa.com)

**JWM HI-Tech**

**Development Co., LTD**  
 Phone: 862-483-3782790  
 Fax: 862-483-782780  
[www.lockmanage.com](http://www.lockmanage.com)

**KABA ILCO Corp.**

Phone: 800-334-1381  
 Fax: 252-446-4702  
[www.ilco.us/www.adusa.us](http://www.ilco.us/www.adusa.us)

**KEY-BAK/West Coast Chain Mfg**

Phone: 909-923-7800  
 Fax: 909-923-0024  
[www.keybak.com](http://www.keybak.com)

**Keyincode, LLC**

Phone: 978-207-0269  
<https://keyincode.com>

**KEYLEX USA**

Phone: 773-837-9777  
[www.keylexusa.com](http://www.keylexusa.com)

**Keyline USA**

Phone: 800-891-2118  
 Fax: 216-803-0202  
[www.bianchi1770usa.com](http://www.bianchi1770usa.com)

**Klassy Keys**

Phone: 888-844-5397  
 Fax: 806-610-6670  
[www.klassykeys.com](http://www.klassykeys.com)

**KSP-Killeen Security Products**

Phone: 800-577-5397  
 Fax: 508-753-2183  
[www.iccore.com](http://www.iccore.com)

**LAB Security Systems**

Phone: 800-243-8242  
[www.labpins.com](http://www.labpins.com)

**Locinox USA**

Phone: 877-562-4669  
[www.locinoxusa.com](http://www.locinoxusa.com)

**Lock Labs, Inc.**

Phone: 855-562-5522  
[www.locklabs.com](http://www.locklabs.com)

**Lock Net LLC**

Phone: 800-887-4307  
 Fax: 877-887-4958  
[www.locknet.com](http://www.locknet.com)

**LockPicks.Com**

Phone: 408-437-0505  
 Fax: 408-516-0505  
[www.lockpicks.com](http://www.lockpicks.com)

**Locksmith Services s.r.o.**

Phone: 420-604-226550  
[www.locksmith.ca](http://www.locksmith.ca)

**Lucky Line Products, Inc.**

Phone: 858-549-6699  
 Fax: 858-549-0949  
[www.luckyline.com](http://www.luckyline.com)

**Master Lock Company LLC**

Phone: 800-558-5528  
 Fax: 414-444-0322  
[www.masterlock.com](http://www.masterlock.com)

**Medeco Security Locks**

Phone: 540-380-5000  
 Fax: 540-380-1768  
[www.medeco.com](http://www.medeco.com)

**Mul-T-Lock USA**

Phone: 800-562-3511  
[www.mul-t-lockusa.com](http://www.mul-t-lockusa.com)

**NAPCO Security Technologies Inc.**

Phone: 631-842-9400  
 Fax: 631-789-9292  
[www.napcosecurity.com](http://www.napcosecurity.com)

**National Auto Lock Service Inc.**

Phone: 650-875-0125  
 Fax: 650-875-0123  
[www.laserkey.com](http://www.laserkey.com)

**Olympus Lock Inc.**

Phone: 206-362-3290  
 Fax: 206-362-3569  
[www.olympus-lock.com](http://www.olympus-lock.com)

**Pacific Lock Company**

Phone: 888-562-5565  
 Fax: 661-294-3097  
[www.paclock.com](http://www.paclock.com)

**PDQ Manufacturing**

Phone: 717-656-5355  
 Fax: 717-656-6892  
[www.pdqlocks.com](http://www.pdqlocks.com)

**Philadelphia Hardware Group**

Phone: 858-642-0450  
 Fax: 858-642-0454  
[www.philihardware.com](http://www.philihardware.com)

**Premier Lock**

Phone: 908-964-3427  
 Fax: 877-600-4747  
[www.griptighttools.com](http://www.griptighttools.com)

**Promet Safe LTD**

Phone: 44-7956-097628  
 Fax: 359-4-316-28-43  
[www.promet-safe.com](http://www.promet-safe.com)

**QSecurity Industries**

Phone: 859-241-2063  
 Fax: 859-241-2064  
[www.qsecurityindustries.com](http://www.qsecurityindustries.com)

**RemoteLock Pro**

Phone: 877-254-5625  
[www.remotelockpro.com](http://www.remotelockpro.com)

**Salto Systems**

Phone: 770-452-6091  
 Fax: 770-452-6098  
[www.saltosystems.com](http://www.saltosystems.com)

**Sargent and Greenleaf, Inc.**

Phone: 859-885-9411  
 Fax: 859-885-3063  
[www.sargentandgreenleaf.com](http://www.sargentandgreenleaf.com)

**SECO-LARM USA INC.**

Phone: 949-261-2999  
 Fax: 949-261-7326  
[www.seco-larm.com](http://www.seco-larm.com)

**SecuRam Systems, Inc.**

Phone: 805-988-8088  
[www.securamsys.com](http://www.securamsys.com)

**Secure-T-Agency (STA)**

Phone: 514-963-3701  
 Fax: 514-447-1024  
[www.secure-t.ca](http://www.secure-t.ca)

**Securitech Group Inc.**

Phone: 718-392-9000  
 Fax: 718-392-8944  
[www.securitech.com](http://www.securitech.com)

**Security Door Controls**

Phone: 805-494-0622  
 Fax: 866-611-4784  
[www.sdcsecurity.com](http://www.sdcsecurity.com)

**Select Hinges**

Phone: 269-910-1988  
 Fax: 269-323-3815  
[www.selecthinges.com](http://www.selecthinges.com)

**Shenzhen Changguang Technology Co., Ltd**

Phone: 0755-28687293  
[www.cgprogcar.com/en/](http://www.cgprogcar.com/en/)

**Stanley Security Solutions Inc.**

Phone: 317-572-1934  
 Fax: 317-578-4909  
[www.stanleysecuritysolutions.com](http://www.stanleysecuritysolutions.com)

**STRATTEC Security Corp.**

Phone: 414-247-3333  
 Fax: 414-247-3564  
[aftermarket.strattec.com](http://aftermarket.strattec.com)

**Tecnoinsurrezza**

Phone: 859-480-9918  
[www.usatecno.com](http://www.usatecno.com)

**TopDon USA, Inc.**

Phone: 833-629-4832  
[www.topdonusa.com](http://www.topdonusa.com)

**TownSteel, Inc.**

Phone: 626-965-8917  
[www.townsteel.com](http://www.townsteel.com)

**Vanderbilt Industries**

Phone: 973-316-3900  
 Fax: 973-316-3999  
[www.vanderbiltindustries.com](http://www.vanderbiltindustries.com)

**Wilson Bohannon Company**

Phone: 800-382-3639  
[www.padlocks.com](http://www.padlocks.com)

## SERVICE ORGANIZATIONS

**Advanced Digital**

**Locksmiths Group**  
 Phone: 877-237-6969  
[advdlg.com](http://advdlg.com)

**ASSA Technical Services Inc.**

Phone: 724-969-2595  
[www.assatechnicalservicesinc.com](http://www.assatechnicalservicesinc.com)

**Auto Key Pro**

Phone: 289-441-4446  
[www.autokeypro.ca](http://www.autokeypro.ca)

**Best Key Supply**

Phone: 857-400-9004  
[www.bestkeysupply.com](http://www.bestkeysupply.com)

**Dynamark Monitoring**

Phone: 321-615-1116  
[www.dynamarkmonitoring.com](http://www.dynamarkmonitoring.com)

**Facilities IQ**

Phone: 412-956-2900  
[www.myfacilitiesiq.com](http://www.myfacilitiesiq.com)

**Fleetr**

Phone: 415-651-7575  
[www.fleetr.com](http://www.fleetr.com)

**KEYS INC.**

Phone: 520-523-5203  
 Fax: 520-268-8878  
[www.keysapp.com](http://www.keysapp.com)

**Versured**

Phone: 877-322-2276  
[versured.com/locksmiths](http://versured.com/locksmiths)

**Workiz Inc.**

Phone: 855-790-7363  
[www.workiz.com](http://www.workiz.com)

**Zellner Insurance Agency**

Phone: 904-356-1492  
 Fax: 904-354-4328  
[www.zellnerinsurance.com](http://www.zellnerinsurance.com)



### Now Hiring

Port Miami, Miami Dade County  
Institutional Locksmith position open.  
Contact jleiva@miamidade.gov if interested. <6/25>

### Business for Sale: Galaxy Lock and Alarm

Galaxy Lock and Alarm, a reputable business located in Throggs Neck section of the Bronx, New York, is seeking a motivated buyer to continue servicing our valued customers in the future. This is an ideal opportunity for someone with 10 years of experience in the field of locksmithing, low voltage locking systems, and safe work to take over a well-established business. Favorable terms for the right person.

Key Highlights:

- Over 40 years in business on the same block with the same phone number
- 1000 sq ft retail store with a 2-car garage
- Owner will assist with transition to ensure maximum income from existing client base

If you are interested and qualified in this golden opportunity, please send your resume to: galaxylock@optonline.net. <5/25>

### Van and Inventory For Sale

Retiring KW Lock & Security, Inc after 50 years in business. For sale are a 2016 white Chevy Express G2500 Van with A/C in like-new condition along with tools, equipment and stocked inventory (business itself and accounts are not for sale). Van setup includes shelves, cabinets, workbench, backup camera, hockey puck locks on the doors, stereo radio/CD player and automatic windows. Asking \$50,000 for everything. Cashier checks accepted. Some extras could be arranged at the time of the sale. Located in Montgomery County, Maryland. Emailing is preferred. Contact Tom Lucas at abettersmith44@gmail.com or 301-467-0541. <5/25>

### Partner Needed

Licensed locksmith with more than 40 years experience in the industry is looking for a partner in a new locksmith agency business. Please call Mike with Superior Lock Service at (464) 204-4098 if interested. <5/25>

### Key Cutting Machine For Sale

Framon Model 2, key cutting machine, Serial number 751515  
Included is "Key cutting depth and spaces information book  
Cost is \$499.00 which includes shipping to any of US 48 States  
Contact: Towerkey3@aol.com, cell 813 601-7940 <5/25>

### Classified Advertising Policy

Classified advertising space is provided free of charge to ALOA members and for a fee of \$3 per word with a \$100 minimum for nonmembers. Classified ads may be used to advertise used merchandise and overstocked items for sale, "wanted to buy" items, business opportunities, employment opportunities/positions wanted and the like. Members or nonmembers wishing to advertise services or new merchandise for sale may purchase a "Commercial Classified Ad" for a fee of \$4 per word with a minimum of \$100.

Each ad will run for three consecutive issues. For blind boxes, there is a \$10 charge for members and nonmembers. All ads must be submitted in a word document format and emails to adsales@aloea.org by the 15th of the month two months prior to issue date. ALOA reserves the right to refuse any classified advertisement that it deems inappropriate according to the stated purpose of the classified advertising section.



FOR SALE

## HISTORIC LOCKSMITH MUSEUM A RARE INVESTMENT OPPORTUNITY

Own a piece of history with this one-of-a-kind museum showcasing an extensive collection of locks and security artifacts dating from the 1800s to today. Located in the Midwest, this museum is a treasure trove of over 800 items for collectors, investors, and history enthusiasts.

Contact us today for more information!

ILLINOISLOCKSMITHMUSEUM.COM

## INTRODUCING THE ALOA TECH LINK AND SAVTA TECH LINK MOBILE APPS



Access hundreds of technical articles from *Keynotes* and *Safe & Vault Technology*, right at your fingertips.

- Read technical articles dating back to 2010
- Browse articles by category, keyword, author or title
- Watch videos, read Technical Bulletins and more



Download the free apps from your smartphone at:  
www.aloeatechlink.com | www.savtatechlink.com



Advertiser	Ad Location	Website	Phone Number
Assa-Ruko/Technical Services	page 33	www.assatechnicalservicesinc.com	(724) 969-2595
Autel	pages 11, 33	www.autel.com	
Big Red	page 33	www.bigredsafelocks.com	(877) 423-8073
ClearStar Security Network	page 61	www.clearstar.com	(360) 379-2494
Elmer & Son	page 60	www.illinoislocksmithmuseum.com	
Framon	page 1	www.framon.com	(989) 354-5623
Hollon Safe	page 57	www.hollonsafe.com	(888) 455-2337
Lock Caddy	page 31	www.lockcaddy.com	(708) 246-6769
Lockmasters	page 7	www.lockmasters.com	
Medeco	page 19	www.medeco.com	
SECLOCK	back cover, page 33	www.seclock.com	(800) 847-5625
Turn 10 Wholesale	page 3	www.turnten.com	(800) 848-9790

## A Secure Future? It's a Lock.

Since its inception, the ALOA Scholarship Foundation (ASF) has been dedicated to one mission: securing the future of the locksmith/security industry. By providing scholarships and financial assistance to current and aspiring locksmiths/security technicians, ASF works to ensure our industry is powered by motivated, educated trade professionals.

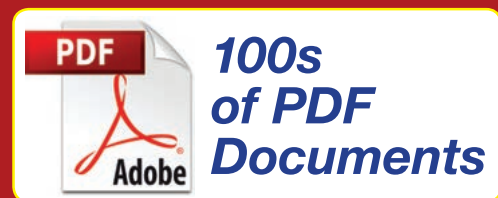
Information and applications are available on the ASF tab on ALOA.org.



# ClearStar

## SECURITY NETWORK

Online Answers 24/7



The **#1** online choice of  
professional locksmiths and  
safe techs remains...



**CSN**  
Since 1995

Seeing is  
believing!  
Free trial  
memberships

# ClearStar.com



**Every finish.**

**Every function.**

**Every design.**

**Every time.**